

TM 5-3431-227-24P

DEPARTMENT OF THE ARMY TECHNICAL MANUAL

TECHNICAL MANUAL

ORGANIZATIONAL, DS, GS AND DEPOT

MAINTENANCE REPAIR PARTS

AND SPECIAL TOOLS LIST

WELDING SET, ARC

INERT GAS SHIELDED, AIR COOLED, METAL LINED

GUN FOR 3/64 IN. WIRE

(WESTINGHOUSE MODEL SA-136)

FSN 3431-121-5878

HEADQUARTERS, DEPARTMENT OF THE ARMY

7 JULY 1971

TECHNICAL MANUAL }
 No. 5-3431-227-24P }

HEADQUARTERS
 DEPARTMENT OF THE ARMY
 WASHINGTON, D. C., 7 July 1971

ORGANIZATIONAL, DS, GS, AND DEPOT
 MAINTENANCE REPAIR PARTS AND SPECIAL TOOLS LIST

WELDING SET, ARC
 INERT GAS SHIELDED, AIR COOLED, METAL LINED

GUN FOR 3/64 IN. WIRE
 (WESTINGHOUSE MODEL SA-136)

FSN 3431-121-5878

Current as of 24 June 1971

	Listing Page	Illustration Figure
SECTION I. INTRODUCTION	ii	
II. PRESCRIBED LOAD ALLOWANCE	1	
III. REPAIR PARTS FOR ORGANIZATIONAL MAINTENANCE	2	
Group 01. Control Monitor	2	
Control Assembly		1
Panel assembly		2
Contractor assembly		3
Load relay and capacitor		4
02. Welding Gun	6	
Gun assembly		5
Handle assembly		6
03. Gas Regulator	9	
Regulator		7
04. Miscellaneous Components	9	
Carrying case and cable		8
SECTION IV. SPECIAL TOOLS, TEST AND SUPPORT EQUIPMENT		
Not Applicable		
V. REPAIR PARTS FOR DS, GS AND DEPOT MAINTENANCE	10	
Group 01. Control Monitor	10	
Control assembly		1
Panel assembly		2
Contractor assembly		3
Load relay and capacitor		4
02. Welding Gun	16	
Gun Assembly		5
Handle assembly		6
03. Gas Regulator	19	
Regulator		7
04. Miscellaneous Components	19	
Carrying case and cable		8
SECTION VI. SPECIAL TOOLS, TEST AND SUPPORT EQUIPMENT		
Not Applicable		
VII. FEDERAL STOCK NUMBER AND REFERENCE NUMBER INDEX	28	

Section I.

INTRODUCTION

1. Scope

This manual lists repair parts, special tools, test and support equipment required for the performance of organizational, direct support, general support and depot maintenance of the welding set.

2. General

This Repair Parts and Special Tools List is divided into the following sections:

a. Prescribed Load Allowance (PLA)-Section II. A composite listing of repair parts, special tools, test and support equipment having quantitative allowances for initial stockage at the organizational level.

b. Repair Parts-Section III. A list, in figure and item number sequence, of repair parts authorized at the organizational level for the performance of maintenance, including those items which must be removed for replacement of the authorized item. Items, except kits and sets, are listed by assembly group in top down breakdown sequence.

c. Special Tools, Test and Support Equipment-Section IV. Not Applicable.

d. Repair Parts-Section V. A list, in figure and item number sequence, of the repair parts authorized for the performance of maintenance at the direct support, general support levels, including those items which must be removed for replacement of the authorized item. Items, except kits and sets, are listed by assembly group in top down breakdown sequence.

e. Special Tools, Test and Support Equipment-Section VI. Not Applicable.

f. Federal Stock Number and Reference Number Index-Section VII. A list of Federal Stock Numbers in ascending numerical sequence, followed by a list of reference numbers appearing in all listings, in ascending alpha-numeric sequence, cross-referenced to the illustration figure and item number.

NOTE

Items not illustrated are cross-referenced to assembly group number.

3. Explanation of Columns

The following provides an explanation of columns in the tabular lists in Sections II through VI.

a. Source, Maintenance, and Recoverability Codes (SMR).

(1) Source code indicates the source for the listed items. Source Codes are:

<i>Code</i>	<i>Explanation</i>
P	Repair Parts, Special Tools and Test Equipment supplied from the GSA/ DSA, or Army supply system, and authorized for use at indicated maintenance categories.
P2	Repair Parts, Special Tools and Test Equipment which are procured and stocked for insurance purposes because the combat or military essentiality of the end item dictates that a minimum quantity be available in the supply system.
M	Repair Parts, Special Tools and Test Equipment which are not procured or stocked, as such, in the supply system but are to be manufactured at indicated maintenance levels.
A	Assemblies which are not procured or stocked as such, but are made up of two or more units. Such component units carry individual stock numbers and descriptions, are procured and stocked separately and can be assembled to form the required assembly at indicated maintenance categories.
X	Parts and assemblies that are not procured or stocked because the failure rate is normally below that of the applicable end item or component. The failure of such part or assembly should result in retirement of the end item from the supply system.
X1	Repair Parts which are not procured or stocked. The requirement for such items will be filled by the next higher assembly or component.
X2	Repair Parts, Special Tools and Test Equipment which are not stocked and have no foreseen mortality. The indicated maintenance category requiring such repair parts will attempt to obtain the parts through cannibalization or salvage, the item may be requisitioned with exception data, from the end item manager, for immediate use.
G	Major assemblies that are procured with PEMA funds for initial issue only as exchange assemblies at DSU and GSU level. These assemblies will not be stocked above the DS and GS level or returned to depot supply level.

(2) Maintenance code indicates the lowest category of maintenance authorized to install the listed item, Repair parts and special tools assigned Maintenance Code "C" may be stocked at the operator level of maintenance when authorized by the Unit Commander. The maintenance level codes are:

Code	Explanation
C	Crew or Operator maintenance
O	Organizational maintenance
F	Direct Support maintenance
H	General Support maintenance

(3) Recoverability code indicates whether unserviceable items should be returned for recovery or salvage. Items not coded are expendable. Recoverability codes are:

Code	Explanation
R	Applied to repair parts, (assemblies or components) special tools and test equipment which are considered economically reparable at direct and general support maintenance levels. When the item is no longer economically reparable, it is normally disposed of at the GS level. When supply considerations dictate, some of these repair parts may be listed for automatic return to supply for depot level repair as set forth in AR 710-50. When so listed, they will be replaced by supply on an exchange basis.
S	Repair Parts, Special Tools, Test Equipment and assemblies which are economically reparable at DSU and GSU activities and which normally are furnished by supply on an exchange basis. When items are determined by a GSU to be uneconomically reparable, they will be evacuated to a depot for evaluation and analysis before final disposition.
T	Higher dollar value recoverable repair parts, special tools and test equipment which are issued on an exchange basis. Such items will be repaired or overhauled at depot maintenance activities only. No repair may be accomplished at lower levels.
U	Repair Parts, Special Tools and Test Equipment specifically selected for salvage by reclamation units because of precious metal content, critical materials, high dollar value or reusable casings or castings.

b. Federal Stock Number. Indicates the Federal stock number assigned to the item and will be used for requisitioning purposes.

c. Description. Indicates the Federal item name and any additional description of the item required. Assembly components and subassemblies are indented under major assemblies. The abbreviation "w/e" when used as part of the nomenclature, indicates the Federal stock number includes all armament, equipment, accessories, and repair parts issued with the item. A part number or other reference number is followed by the applicable five-digit Federal supply code for manufacturers in parenthesis. Repair parts quantities included in kits and sets are shown in front of the repair part name. Material required for manufacture or fabrication is identified.

d. Unit of Measure (U/M). A two-character alphabetic abbreviation indicating the amount or quantity of the item, as used, upon which the allowances are based, e.g., ft., ea., pr., etc.

e. Quantity Incorporated in Unit. Indicates the quantity of the item used in the assembly group. A "V" appearing in this column in lieu of a quantity indicates that a definite quantity cannot be indicated (e.g., shims, spacers, etc.).

f. Fifteen-Day Organizational Maintenance Allowance.

(1) The allowance columns are divided into four subcolumns. Indicated in each subcolumn opposite the first appearance of each item is the total quantity of the items authorized for the number of equipments supported. Subsequent appearances of the same item will have the letters "REF" in the allowance column, indicating total allowance quantities will be shown with the first appearance of the item. To locate referenced item, locate the FSN or reference number in the index. The earliest figure and item number is the referenced item. Items authorized for use as required but not for initial stockage are identified with an asterisk in the allowance column

(2) The quantitative allowances for organizational level of maintenance represents one initial prescribed load for a 15-day period for the number of equipments supported. Units authorized additional prescribed loads will multiply the number of prescribed loads authorized by the quantity of the repair parts reflected in the appropriate density column to obtain the total quantity of repair parts authorized.

(3) Organizational units providing maintenance for more than 100 of these equipments shall determine the total quantity of parts required by: First, divide the number of equipments supported by 100 by moving the decimal two spaces left; second, multiply the result by the quantity in the 51-100 density column. Example, authorized allowance for 51-100 equipments is 40; for 150 equipments, multiply 40 by 1.50 or 60 parts required.

(4) Subsequent changes to allowances will be limited as follows: No change in the range of items is authorized. If additional items are considered necessary, recommendations should be forwarded to U. S. Army Mobility Equipment Command for exception or revision to the allowance list. Revision to the range of items authorized will be made by the U. S. Army Mobility Equipment Command based on engineering experience, demand data, or TAERS information.

g. Thirty-Day DS/GS Maintenance Allowances.

NOTE

Allowances in GS column are for GS maintenance only.

(1) The allowance columns are divided into three subcolumns. Indicated in each subcolumn, opposite the first appearance of each item, is the total quantity of items authorized for the number of equipments supported. Subsequent appearances of the same item will have the letters "REF" in the applicable allowance column. To locate the referenced item, locate the FSN or reference number in the index. The earliest figure and item number is the referenced item. Items authorized for use as required but not for initial stockage are identified with an asterisk in the allowance column.

(2) The quantitative allowance for DS/GS levels of maintenance will represent initial stockage for a 30-day period for the number of equipments supported.

(3) To determine allowances when supporting more than 100 of these equipments: First, divide the number of equipments supported by 100 by moving the decimal two places left; second, multiply the result by the quantity in the 51-100 density column. Example, authorized allowance for 51-100 equipments is 40; for 150 equipments multiply 40 by 1.50 or 60 parts required.

h. One-Year Allowance Per 100 Equipments/Contingency Planning Purposes. This column indicates opposite the first appearance of each item the total quantity required for distribution and contingency planning purposes. Subsequent appearance of the same item will have the letters "REF" in this column. The range of items indicates total quantities of all authorized items required to provide for adequate support of 100 equipments for one year.

i. Depot Maintenance Allowance Per 100 Equipments. This column indicates opposite the first appearance of each item, the total quantity authorized for depot maintenance of 100 equipments. Subsequent appearances of the same item will have the letters "REF" in this column. Items authorized for use but not for initial stockage are identified with an asterisk in the allowance column.

j. Illustration. This column is divided as follows :

(1) *Figure number.* Indicates the figure number of the illustration on which the item is shown.

(2) *Item number.* Indicates the callout number used to reference the item on the illustration.

4. Special Information

a. Repair parts mortality has been based on 1500 hours operation per year.

b. Parts which require manufacture or assembly of a category higher than that authorized for installation will indicate in the source column the higher category.

c. The following publication pertains to the welding set and its components:

TM 5-3431-227-14 Operator's, Organizational, DS and GS Maintenance Manual

d. The same illustrations are used to illustrate the repair parts and special tools listed in both organizational maintenance section and direct and general support maintenance section.

5. How to Locate Repair Parts

a. When the Federal stock number or reference number is unknown:

(1) *First.* Using the table of contents, determine the assembly group within which the repair part belongs. This is necessary since illustrations are prepared for assembly groups, and listings are divided into the same groups.

(2) *Second.* Find the illustration covering the assembly group to which the repair part belongs.

(3) *Third.* Identify the repair part on the illustration and note the illustration figure and item number of the repair part.

(4) *Fourth.* Using the Repair Parts Listing, find the assembly group to which the repair part belongs and locate the illustration figure and item number noted on the illustration.

b. When the Federal stock number or reference number is known:

(1) *First.* Using the Index of Federal Stock Numbers and Reference Numbers find the pertinent Federal stock number or reference number. This index is in ascending FSN sequence followed by a list of reference numbers in alpha-numeric sequence, cross-referenced to the illustration figure number and item number.

(2) *Second.* Using the Repair Parts Listing, find the assembly group of the repair part and the illustration figure number and item number referenced in the Index of Federal Stock Numbers and Reference Numbers.

c. When the Federal stock number or reference number is known and the repair part is not illustrated:

(1) *First.* Using the Index of Federal Stock Numbers and Reference Numbers find the pertinent Federal stock number or reference number in the section titled "Items Not Illustrated" and note the group number. This section is in ascending FSN sequence followed by a list of reference numbers in alpha-numeric sequence cross-referenced to assembly group number.

(2) *Second.* Using the Table of Contents, locate the assembly group number and page number.

(3) *Third.* Using the applicable group number and page number, locate the pertinent stock number or reference number in the Repair Parts Listing. Items which are not illustrated are listed at the end of the assembly group to which they belong.

6. Abbreviations

assy	assembly
ea	each
hex	hexagon
id	inside diameter
in.	inch(es)
lg	long
mtg	mounting
No.	number
od	outside diameter
thd	thread (s) (ed)
thk	thick (ness)

7. Federal Supply Codes for Manufacturers

<i>Code</i>	<i>Manufacturer</i>
00779	AMP Inc.
05072	Loctite Corp.
06352	Empire Products Inc.

<i>Code</i>	<i>Manufacturer</i>
07903	Relay and Control Corp. Sargent Electric Division
08452	Westinghouse Electric Corp. Welding Dept
09505	Imperial-Eastman Corp.
12697	Clarostat Mfg Co. Inc.
14655	Cornell-Dubilier Electric Corp.
21335	Fafnir Bearing Co.
28520	Heyman Mfg Co.
44655	Jhmite Mfg Co.
56289	Sprague Electric Co.
63026	Victor Equipment Co.
71279	Cambridge Thermionic Corp.
72794	DZUS Fastener Co. Inc.
75042	IRC Division of TRW Inc.
75915	Littlefuse Inc.
77342	American Machine and Foundry Co.
82893	Vector Electronic Co.
83330	Smith Herman H. Inc.
88044	Aeronautical Standards Group Dept of Navy and Air Force
88725	Westinghouse Electric Corp. Control Division
91929	Honeywell Inc. Building Controls and Components Group Micro Switch Division
92194	Alpha Wire Corp.
93790	Cornell-Dubilier Electronics Division Federal Pacific Electric Corp.
96906	Military Standards
97073	Prince Rubber and Plastic Co. Inc.

8. Recommendations for Maintenance publications Improvements

Report of errors, omissions, and recommendations for improving this publication by the user is encouraged. Reports should be submitted on DA Form 2028 (Recommended Changes to Publications) and forwarded direct to Commanding General, U. S. Army Mobility Equipment Command, ATTN: AMSME-MPP, 4300 Goodfellow Boulevard, St. Louis, Mo. 63120.

(1) FEDERAL STOCK NUMBER	(2) DESCRIPTION	USABLE ON CODE	(3) 15-DAY ORGANIZATIONAL MAINTENANCE ALLOWANCE			
			(A) 1-5	(B) 6-20	(C) 21-50	(D) 51-100
	SECTION II - PRESCRIBED LOAD ALLOWANCE					
	GROUP 01 - CONTROL MONITOR					
3431-875-7656	CABLE ASSEMBLY, LINE	*	*	*	1	
5905-875-7883	RESISTOR, ADJUSTABLE: MOTOR VOLTAGE SUPPLY, 250 OHMS, 25 WATTS	*	*	*	2	
5905-875-7886	RESISTOR: ARMATURE RELAY TO LOAD RELAY, 25 OHM, 25 WATTS	*	*	*	2	
5905-875-7887	RESISTOR: CONTROL PANEL	*	*	*	2	
5905-875-7890	RESISTOR: LOAD RELAY TO CONTROL RHEOSTAT, 10 WATT, 5 OHM	*	*	*	2	
5910-845-7400	CAPACITOR: 400V, DC, STANDOFF INSULATION TO ARMATURE RELAY	*	*	2	2	
5910-875-7888	CAPACITOR: 600V, DC (4C,3C)	*	2	2	2	
5920-142-7383	FUSE: MOTOR, 1 AMP	*	2	2	4	
5920-280-5062	FUSE: LINE, 2 AMP	*	2	3	6	
	DIODE IN4822 (08452)	*	*	2	2	
	GROUP 02 - WELDING GUN					
3431-446-2639	O RING: REEL COVER BOLT	*	*	1	1	
3431-446-2641	WASHER, FIBER: IDLER ROLL MTG	*	*	2	2	
3431-446-2642	NOZZLE, GAS	*	*	*	2	
3431-446-2644	TUBE, GUIDE	3	6	12	26	
3431-875-7633	ROLL DRIVE	2	2	4	8	
3431-875-7637	WASHER: BARREL TO BRACKET ASSEMBLY, BARREL TO ADAPTER	*	*	*	2	
3431-875-7642	INSULATION: GUN BARREL	*	*	1	1	
3431-875-7645	BEARING, BALL: IDLER ROLL	*	*	*	2	
3431-875-7646	SCREW, NYLON: IDLER ROLL MTG, NO. 10-32 THD SIZE, 5/8 IN. LG	*	*	*	2	
3431-875-7648	SPRING: WIRE PRESSURE ADJUSTING	*	*	*	2	
3431-875-7930	ADAPTER: GUN TUBE TO NOZZLE	*	1	1	3	
	O RING: GUN BARREL, 11/32 IN. OD, 7/32 IN. ID AN6227B4 (88044)	*	*	*	2	
	BUSHING, NYLON 2209A70H01 (08452)	2	2	4	8	
	BUSHING, NYLON: INLET GUIDE 2213A42H01 (08452)	2	2	4	8	
	SPRING 452A106H01 (08452)	*	*	*	2	

(1) SMR CODE	(2) FEDERAL STOCK NUMBER	(3) DESCRIPTION REF NUMBER & MFR CODE	(4) USABLE ON CODE	(5) UNIT OF MEAS	(6) QTY INC IN UNIT	(6) 15-DAY ORGANIZATIONAL MAINTENANCE ALW				(7) ILLUS- TRATION	
						(A) 1-5	(B) 6-20	(C) 21-50	(D) 51-100	(A) FIG NO	(B) ITEM NO
		SECTION III - REPAIR PARTS FOR ORGANIZATIONAL MAINTENANCE									
		GROUP 01 - CONTROL MONITOR									
X20		CONTROL ASSEMBLY: AC 483B126G01 (08452)	EA		1					1	1
P20		KNOB: WIRE FEED 24435 (08452)	EA		1	*	*	*	*	1	2
P O	5905-196-2300	RHEOSTAT: 25 WATT, WIRE FEED CONTROL 0149 (44655)	EA		1	*	*	*	*	1	3
P O	5305-855-0971	SCREW, SELF-TAPPING: CAUTION PLATE MTG, NO. 6-32 THD SIZE, 1/4 IN. LG MS24629-21 (96906)	EA		8	*	*	*	*	1	4
X20		NAMEPLATE 199P297H01 (88725)	EA		1					1	5
P O	5920-556-0144	FUSEHOLDER 342004 (75915)	EA		3	*	*	*	*	1	6
P O	5920-280-5062	FUSE: LINE, 2 AMP 312002 (75915)	EA		2	*	2	3	6	1	7
P O	5920-142-7383	FUSE: MOTOR, 1 AMP 312001 (75915)	EA		1	*	2	2	4	1	8
P O	5305-855-0972	SCREW, SELF-TAPPING: RECEPTACLE MTG, NO. 6-32 THD SIZE, 3/8 IN. LG MS24629-23 (96906)	EA		4	*	*	*	*	1	9
P O		RECEPTACLE: GUN CONTROL CABLE AN3102A20-17S (88044)	EA		1	*	*	*	*	1	10
P O	4730-014-0561	LOCKNUT, CONDUIT: 1 1/2 IN.	EA		1	*	*	*	*	1	11
P O	5935-072-6056	RECEPTACLE, FEMALE: CURRENT CABLE FM468 (06352)	EA		1	*	*	*	*	1	12
P O	5310-543-4791	NUT, PLAIN, HEXAGON: BRASS MS35690-411 (96906)	EA		1	*	*	*	*	1	13
P O	5310-209-0786	WASHER, LOCK: CURRENT CABLE RECEPTACLE MTG MS35335-33 (96906)	EA		1	*	*	*	*	1	14
X20		TERMINAL 196A033H05 (08452)	EA		4					1	15
P O	5930-875-7882	SWITCH, TOGGLE: CONTROL PANEL LINE 3001 (07903)	EA		1	*	*	*	*	1	16
P O	5305-622-9476	SCREW, MACHINE: TERMINAL STRIP MTG, NO. 8-32 THD SIZE, 5/8 IN. LG, FILLISTER HEAD MS35265-46 (96906)	EA		3	*	*	*	*	1	17
P O	5310-012-0622	NUT, PLAIN, HEXAGON: TERMINAL STRIP MTG, CABLE CLAMP MTG, NO. 8-32 THD SIZE MS35649-82 (96906)	EA		5	*	*	*	*	1	18
P O	5310-045-3299	WASHER, LOCK: TERMINAL STRIP MTG, NO. 8 MS35338-42 (96906)	EA		9	*	*	*	*	1	19
P O	5305-622-9478	SCREW, MACHINE: TERMINAL STRIP GROUNDING, CABLE CLAMP MTG, NO. 8-32 THD SIZE, 1 IN. LG MS35265-49 (96906)	EA		2	*	*	*	*	1	20
P O	3431-858-3080	TERMINAL STRIP 210 (08452)	EA		1	*	*	*	*	1	21

(1) SMR CODE	(2) FEDERAL STOCK NUMBER	(3) DESCRIPTION REF NUMBER & MFR CODE	(4) USABLE ON CODE	(5) UNIT OF MEAS	(6) QTY INC IN UNIT	(6) 15-DAY ORGANIZATIONAL MAINTENANCE ALW				(7) ILLUS- TRATION (A) (B)	
						(A) 1-5	(B) 6-20	(C) 21-50	(D) 51-100	(A) FIG NO	(B) ITEM NO
P O	5310-559-0070	WASHER, LOCK: TERMINAL STRIP MTG, INTERNAL TOOTH MS35333-38 (96906)	EA	1	*	*	*	*	1	1	22
X20		CLAMP, CABLE 1781453 (88725)	EA	4					1		23
X20		STRIP, MARKING 2213A83H01 (08452)	EA	1					1		24
P O	5905-875-7890	RESISTOR: LOAD RELAY TO CONTROL RHEOSTAT, 10 WATT, 5 OHM FR10F (12697)	EA	1	*	*	*	2	1	1	25
X20		TERMINAL: LOAD RELAY RESISTOR 1458309 (88725)	EA	1					1		26
X20		RELIEF, STRAIN: LINE CABLE ASSEMBLY SR6P1 (28520)	EA	1					1		27
P O		CABLE ASSEMBLY, CURRENT 59C1598G13 (08452)	EA	1	*	*	*	*	1	1	28
X20		CABLE, WELDING 59C1598H19 (08452)	EA	1					1		29
X20		TERMINAL 1603078 (88725)	EA	1					1		30
X20		RELIEF, STRAIN: GROUND CABLE ASSEMBLY SR2M1 (28520)	EA	1					1		31
P O	3431-875-7657	CABLE ASSEMBLY: GROUND 432C524G10 (08452)	EA	1	*	*	*	*	1	1	32
X20		CABLE, SINGLE CONDUCTOR 432C524H19 (08452)	EA	1					1		33
X20		TERMINAL 1797746 (88725)	EA	1					1		34
X20		RELIEF, STRAIN: CURRENT CABLE ASSEMBLY SR8P1 (28520)	EA	1					1		35
P O	3431-875-7656	CABLE ASSEMBLY, LINE 435C512G04 (08452)	EA	1	*	*	*	1	1	1	36
P O	5305-855-0972	SCREW, SELF-TAPPING: BASE AND BACK PLATE MTG, NO. 6-32 THD SIZE, 3/8 IN. LG MS24629-23 (96906)	EA	12	*	*	*	*	1	1	37
X20		PANEL, CABINET 827D037H05 (08452)	EA	1					1		38
X20		BASE, CABINET 827D037H16 (88725)	EA	1					1		39
X20		INCLOSURE 3472D32G01 (08452)	EA	1					1		40
X20		FASTENER AJ5-40 (72794)	EA	1					1		41
X20		GROMMET JHS (72794)	EA	1					1		42
X20		GASKET: CONTROL ASSEMBLY DOOR 447910P (88725)	EA	1					1		43
X20		CABINET 3472D32H01 (08452)	EA	1					1		44
P O	5305-855-0972	SCREW, SELF-TAPPING: PANEL ASSEMBLY MTG, UPPER, NO. 6-32 THD SIZE, 3/8 IN. LG MS24629-23 (96906)	EA	2	*	*	*	*	2	1	1

(1) SMR CODE	(2) FEDERAL STOCK NUMBER	(3) DESCRIPTION REF NUMBER & MFR CODE	(4) USABLE ON CODE	(5) UNIT OF MEAS	(6) QTY INC IN UNIT	(6) 15-DAY ORGANIZATIONAL MAINTENANCE ALW				(7) ILLUS- TRATION	
						(A) 1-5	(B) 6-20	(C) 21-50	(D) 51-100	(A) FIG NO	(B) ITEM NO
P O	5305-582-5807	SCREW, MACHINE: PANEL ASSEMBLY MTG, LOWER, NO. 6-32 THD SIZE, 3/8 IN. LG MS35265-28 (96906)	EA	5	*	*	*	*	*	2	2
P O	5310-834-3156	NUT, PLAIN, HEXAGON: PANEL ASSEMBLY, NO. 6-32 THD SIZE MS35649-62 (96906)	EA	2	*	*	*	*	*	2	3
P O	5310-045-4007	WASHER, LOCK: PANEL MTG, NO. 6 MS35338-41 (96906)	EA	4	*	*	*	*	*	2	4
X20		PANEL ASSEMBLY 221C652G01 (08452)	EA	1						2	5
P O	5305-543-2665	SCREW, MACHINE, FILLISTER HEAD: ARMATURE RESISTOR MTG, 1/4-20 THD SIZE, .37 IN. LG MS35265-77 (96906)	EA	2	*	*	*	*	*	2	6
P O	5310-761-6882	NUT, PLAIN, HEXAGON: ARMATURE RESISTOR MTG, 1/4-20 THD SIZE MS1967-2 (96906)	EA	2	*	*	*	*	*	2	7
P O	5310-582-5965	WASHER, LOCK: ARMATURE RESISTOR MTG, 1/4 IN. MS35338-44 (96906)	EA	2	*	*	*	*	*	2	8
P O	5905-875-7886	RESISTOR: ARMATURE RELAY TO LOAD RELAY, 25 OHM, 25 WATT TYPE6-1-2E (75042)	EA	1	*	*	*	*	2	2	9
P O	5305-069-5122	SCREW, MACHINE, FILLISTER HEAD: CONTROL PANEL RESISTOR (4R) MTG, NO. 8-32 THD SIZE, 2 1/2 IN. LG MS35265-55 (96906)	EA	1	*	*	*	*	*	2	10
P O	5310-012-0622	NUT, PLAIN, HEXAGON: CONTROL PANEL RESISTOR (4R) MTG, NO. 8-32 THD SIZE MS35649-82 (96906)	EA	1	*	*	*	*	*	2	11
P O	5310-045-3299	WASHER, LOCK: CONTROL PANEL RESISTOR (4R) MTG, NO. 8 MS35338-42 (96906)	EA	1	*	*	*	*	*	2	12
P O	5310-809-8544	WASHER, FLAT: CONTROL PANEL RESISTOR (4R) MTG, NO. 8 MS27183-7 (96906)	EA	1	*	*	*	*	*	2	13
X20		WASHER, CORK: CONTROL PANEL RESISTOR (4R) MTG 7249-8 (08452)	EA	2						2	14
P O	5905-875-7887	RESISTOR: CONTROL PANEL VPR20HIK (12697)	EA	1	*	*	*	*	2	2	15
P O	5305-855-0972	SCREW, SELF-TAPPING: ADJUSTABLE RESISTOR (2R) MTG, NO. 6-32 THD SIZE, 3/8 IN. LG, PAN HEAD MS24629-23 (96906)	EA	2	*	*	*	*	*	2	16
P O	5905-875-7883	RESISTOR, ADJUSTABLE: MOTOR VOLTAGE SUPPLY, 250 OHMS, 25 WATTS TYPE2DATYPED (75042)	EA	1	*	*	*	*	2	2	17
P O	5910-875-7888	CAPACITOR: 600V, DC (4C,3C) 73P47306 (56289)	EA	2	*	2	2	2	2	2	18
X20		TERMINAL, SPADE: CAPACITOR MOUNTING (3C,4C AND 5C) 1797751 (88725)	EA	5						2	19
P O		SCREW, TAPPING, THREAD CUTTING: RELAY MTG, NO. 6-32 THD SIZE, 5/8 IN. LG MS24629-25 (96906)	EA	2	*	*	*	*	*	2	20

(1) SMR CODE	(2) FEDERAL STOCK NUMBER	(3) DESCRIPTION REF NUMBER & MFR CODE	(4) USABLE ON CODE	(5) UNIT OF MEAS	(6) QTY INC IN UNIT	(6) 15-DAY ORGANIZATIONAL MAINTENANCE ALW				(7) ILLUS- TRATION	
						(A) 1-5	(B) 6-20	(C) 21-50	(D) 51-100	(A) FIG NO	(B) ITEM NO
P O	5945-875-7884	RELAY PR1D (77342)	EA	1	*	*	*	*	2	21	
P O	5910-845-7400	CAPACITOR: 400V, DC, STANDOFF INSULATOR TO ARMATURE RELAY PJ4P1 (93790)	EA	1	*	*	2	2	2	22	
P O	5310-013-4530	NUT, FLAIN, HEXAGON: STANDOFF INSULATOR, NO. 6-32 THD SIZE MS35649-62 (96906)	EA	1	REF	REF	REF	REF	2	23	
P O	5310-045-4007	WASHER, LOCK: STANDOFF INSULATOR, NO. 6 MS27183-6 (96906)	EA	1	REF	REF	REF	REF	2	24	
P O	5310-082-1404	WASHER, FLAT: CAPACITOR MTG, NO. 6, (5C) MS27183-6 (96906)	EA	1	*	*	*	*	2	25	
X20		INSULATOR, STANDOFF: CAPACITOR MOUNTING (5C) 1581 (71279)	EA	1					2	26	
P O	5310-013-4530	NUT, FLAIN, HEXAGON: RECTIFIER ASSEMBLY (1RX) MTG, NO. 6-32 THD SIZE MS35649-62 (96906)	EA	3	*	*	*	*	2	27	
P O	5310-045-4007	WASHER, LOCK: RECTIFIER ASSEMBLY (1RX) MTG, NO. 6 MS35338-41 (96906)	EA	3	*	*	*	*	2	28	
X20		RECTIFIER ASSEMBLY 2213A04G01 (08452)	EA	1					2	20	
P O		DIODE IN4822 (08452)	EA	4	*	*	2	2	2	30	
X20		TERMINAL, PUSH IN TYPET9-4 (82893)	EA	4					2	31	
X20		PLATE 2213A03H01 (08452)	EA	1					2	32	
X20		SPACER, PHENOLIC TUBING: RECTIFIER ASSEMBLY (1RX) MTG 465A288H02 (08452)	EA	1					2	33	
P O	5305-984-6221	SCREW, MACHINE: RECTIFIER ASSEMBLY (1RX) MTG, NO. 6-32 THD SIZE, 1 IN. LG, PAN HEAD MS35206-234 (96906)	EA	1	*	*	*	*	2	34	
P O	5305-855-0974	SCREW, SELF-TAPPING: ARMATURE RELAY MTG, NO. 6-32 THD SIZE, 5/8 IN. LG, PAN HEAD MS24629-25 (96906)	EA	2	*	*	*	*	2	35	
P O	5945-846-0433	RELAY: ARMATURE PR11D (77342)	EA	1	*	*	*	*	2	36	
X20 R	3431-446-1961	CONTACTOR ASSEMBLY 31D9649COMBBB00 (08452)	EA	1					3	1	
P O	5305-068-0511	SCREW, CAP, HEXAGON HEAD: CONTACTOR PANEL MTG, 3/8-16 THD SIZE, 1 1/4 IN. LG MS90728-62 (96906)	EA	2	*	*	*	*	3	25	
P O	5310-595-7237	WASHER, LOCK: CONTACTOR PANEL MTG, 3/8 IN., INTERNAL TOOTH MS35333-42 (96906)	EA	2	*	*	*	*	3	26	
X20		FISHPAPER: CONTACTOR MTG PANEL TO CONTROL PANEL 448A043H02 (08452)	EA	1					3	27	
P O	5306-226-4827	SCREW, CAP, HEXAGON HEAD: CONTACTOR MTG, 5/16-18 THD SIZE, 1 IN. LG MS90728-34 (96906)	EA	1	*	*	*	*	3	28	

(1) SMR CODE	(2) FEDERAL STOCK NUMBER	(3) DESCRIPTION REF NUMBER & MFR CODE	(4) USABLE ON CODE	(5) UNIT OF MEAS	(6) QTY INC IN UNIT	(6) 15-DAY ORGANIZATIONAL MAINTENANCE ALW				(7) ILLUS- TRATION (A) (B)	
						(A) 1-5	(B) 6-20	(C) 21-50	(D) 51-100	(A) FIG NO	(B) ITEM NO
X20		BUSHING, INSULATING: CONTACTOR MTG 2213A87H01 (08452)	EA		2					3	29
P O	5310-809-4085	WASHER, FLAT: CONTACTOR MTG, 7/16 IN. ID MS27183-16 (96906)	EA		2	*	*	*	*	3	30
P O	5310-880-7744	NUT, PLAIN, HEXAGON: CONTACTOR MTG, 5/16-18 THD SIZE MS51967-5 (96906)	EA		1	*	*	*	*	3	31
X20		NUT, WELL: CONTACTOR MTG, W/INSERT 419A065H01 (08452)	EA		2					3	32
X20		PANEL: CONTACTOR MTG 637C251H01 (08452)	EA		1					3	33
X20		FISHPAPER: CONTACTOR FRAME TO MTG PANEL 448A043H01 (08452)	EA		1					3	34
P O	5305-582-5808	SCREW, MACHINE: LOAD RELAY ASSEMBLY MTG, NO. 6-32 THD SIZE, 5/8 IN. LG. FILLISTER HEAD MS35265-31 (96906)	EA		2	*	*	*	*	4	1
P O	5310-834-3156	NUT, PLAIN, HEXAGON: RELAY ASSEMBLY MTG, NO. 6-32 THD SIZE MS35649-62 (96906)	EA		1	*	*	*	*	4	2
P O	5310-045-4007	WASHER, LOCK: RELAY ASSEMBLY MTG, NO. 6 MS35338-41 (96906)	EA		1	*	*	*	*	4	3
P O	5945-875-7889	RELAY ASSEMBLY 320B224G01 (08452)	EA		1	*	*	*	*	4	4
X20		TERMINAL 320B222H02 (08452)	EA		1					4	5
P O	5910-060-3911	CAPACITOR, ELECTROLYTIC: LOAD RELAY TO GUN RECEPTACLE BR30015 (14655)	EA		1	*	*	*	*	4	6
P O	5305-543-2023	SCREW, MACHINE: CAPACITOR CLIP MTG, NO. 6-32 THD SIZE, 3/16 IN. LG, FILLISTER HEAD MS35265-25 (96906)	EA		1	*	*	*	*	4	7
P O	5310-834-3156	NUT, PLAIN, HEXAGON: CAPACITOR MTG, NO. 6-32 THD SIZE MS35649-62 (96906)	EA		1	*	*	*	*	4	8
X20		CLIP: CAPACITOR MTG UMC16 (56289)	EA		1					4	9
M O		HARNESSE ASSEMBLY 2212A14G01 (08452) MANUFACTURE FROM:	EA		1						
P20		WIRE, 34 FT REQUIRED, P/N 1553 (92194)				*	*	*	*		
P20		TERMINAL, SPADE, .190 STUD, 29 EA, P/N 1603091 (88725)				*	*	*	*		
P20		TERMINAL, 2 EA, P/N 196A033H05 (08452)				*	*	*	*		
		GROUP 02 - WELDING GUN									
X20		GUN ASSEMBLY, WELDING 483B128G01 (08452)	EA		1					5	1
P O	5305-582-5807	SCREW, MACHINE: NO. 6-32 THD SIZE, 3/8 IN. LG, FILLISTER HEAD MS35265-28 (96906)	EA		2	*	*	*	*	5	2

(1) SMR CODE	(2) FEDERAL STOCK NUMBER	(3) DESCRIPTION REF NUMBER & MFR CODE	(4) USABLE ON CODE	(5) UNIT OF MEAS	(6) QTY INC IN UNIT	15-DAY ORGANIZATIONAL MAINTENANCE ALW				(7) ILLUS- TRATION (A) (B)	
						(A) 1-5	(B) 6-20	(C) 21-50	(D) 51-100	(A) FIG NO	(B) ITEM NO
P O	5310-010-3319	WASHER, LOCK: SHIELD TO BRACKET MTG, .141 IN. ID, .253 IN. OD, .031 IN. THK	EA	3	*	*	*	*	5	3	
P O	5310-082-1404	WASHER, FLAT: SHIELD TO BRACKET MTG, .156 IN. ID, .375 IN. OD, .049 IN THK	EA	3	*	*	*	*	5	4	
X20		BOLT: REEL COVER 419A029H01 (08452)	EA	1					5	5	
P O	3438-875-7652	COVER, PLASTIC: WIRE REEL 637C247H01 (08452)	EA	1	*	*	*	*	5	6	
P O	5305-984-5676	SCREW, MACHINE: REEL SHAFT MTG, 5/16-18 THD SIZE, 3/4 IN. LG MS35206-296 (96906)	EA	1	*	*	*	*	5	7	
P O	3431-446-2639	O RING: REEL COVER BOLT 6227-3 (97073)	EA	1	*	*	1	1	5	8	
X20		SHAFT, REEL 448A024H01 (08452)	EA	1					5	9	
P O	5310-639-1532	WASHER, FLAT: REEL SPACER, .313 IN. ID, .875 IN. OD, .065 IN. THK	EA	1	*	*	*	*	5	10	
X20		PLUG, SNAP BUTTON 652 (83330)	EA	1					5	11	
P O	5305-855-0972	SCRE, SELF-TAPPING: BRAKE SUPPORT MTG, NO. 6-32 THD SIZE, 3/8 IN. LG, PAH HEAD MS24629-23 (96906)	EA	2	*	*	*	*	5	12	
P O	5310-010-3319	WASHER, LOCK: BRAKE SUPPORT MTG, .141 IN. ID, .253 IN. OD, .031 IN. THK	EA	2	*	*	*	*	5	13	
P O	5310-082-1404	WASHER, FLAT: BRAKE SUPPORT MTG, .156 IN. ID, .375 IN. OD, .049 IN. THK	EA	2	*	*	*	*	5	14	
X20		SUPPORT, WIRE REEL BRAKE 419A008H01 (08452)	EA	1					5	15	
P O	5305-855-0968	SCREW, SELF-TAPPING: BRAKE TO BRAKE SUPPORT, NO. 4-40 THD SIZE, 1/4 IN. LG, PAH HEAD MS24629-10 (96906)	EA	2	*	*	*	*	5	16	
P O	3431-446-2643	BRAKE, REEL 419A011H01 (08452)	EA	1	*	*	*	*	5	17	
P O	5325-281-3536	BUSHING, RUBBER 282498 (88725)	EA	1	*	*	*	*	5	18	
X20		SHIELD: REEL COVER 3472D41G01 (08452)	EA	1					5	19	
P O	5305-614-0247	SCREW, MACHINE: BEARING ARM MTG, NO. 10-32 THD SIZE, 5/8 IN. LG	EA	1	*	*	*	*	5	20	
P O	3431-875-7644	SWING ARM ASSEMBLY 310B141G01 (08452)	EA	1	*	*	*	*	5	21	
P O	3431-875-7646	SCREW, NYLON: IDLER ROLL MTG, NO. 10-32 THD SIZE, 5/8 IN. LG 442A169H01 (08452)	EA	1	*	*	*	2	5	22	
P O	3431-446-2641	WASHER, FIBER: IDLER ROLL MTG 310B141H04 (08452)	EA	2	*	*	2	2	5	23	
P O	3431-875-7645	BEARING, BALL: IDLER ROLL KP3A (21335)	EA	1	*	*	*	2	5	24	
X20		ARM, BEARING 419A026H02 (08452)	EA	1					5	25	

(1) SMR CODE	(2) FEDERAL STOCK NUMBER	(3) DESCRIPTION REF NUMBER & MFR CODE	(4) USABLE ON CODE	(5) UNIT OF MEAS	(6) QTY INC IN UNIT	(6) 15-DAY ORGANIZATIONAL MAINTENANCE ALW				(7) ILLUS- TRATION (A) (B)	
						(A) 1-5	(B) 6-20	(C) 21-50	(D) 51-100	(A) FIG NO	(B) ITEM NO
X20		BOLT, BEARING ARM: WIRE PRESSURE ADJUSTING 419A025H01 (08452)		EA	1					5	26
P O	3431-875-7648	SPRING: WIRE PRESSURE ADJUSTING 419A027H01 (08452)		EA	1	*	*	*	2	5	27
P O	3431-446-2639	O RING: BEARING ARM MTG 6227-3 (97073)		EA	1	*	*	*	*	5	28
P O	3431-446-2642	NOZZLE, GAS 311B703H02 (08452)		EA	1	*	1	1	3	5	29
P O	3431-875-7635	KNOB 422A505G01 (08452)		EA	1	*	*	*	*	5	30
X20		TUBE, GUN: BARREL HSG 453A483H01 (08452)		EA	1					5	31
P O	3431-875-7930	ADAPTER: GUN TUBE TO NOZZLE 419A003H01 (08452)		EA	1	*	*	*	2	5	32
P O	3431-446-2644	TUBE, GUIDE 306B172H09 (08452)		EA	1	3	6	12	26	5	33
X20		BARREL ASSEMBLY, GUN 419A002G02 (08452)		EA	1					5	34
P O	3431-875-7642	INSULATION: GUN BARREL 419A005H02 (08452)		EA	1	*	*	1	1	5	35
P O	3431-875-7638	WASHER: BARREL TO ADAPTER 419A006H02 (08452)		EA	1	*	*	*	*	5	36
P O	3431-875-7637	WASHER: BARREL TO BRACKET ASSEMBLY, BARREL TO ADAPTER 419A006H01 (08452)		EA	2	*	*	*	2	5	37
P O	5305-253-3756	SETScrew: BARREL ASSEMBLY, 1/4-20 THD SIZE, 1/4 IN. LG, HALF DOG POINT SOCKET MS51041-49 (96906)		EA	1	*	*	*	*	5	38
X20		INSULATION 419A010H01 (08452)		EA	1					5	39
X20		PLUG, PIPE: 1/8 IN. NPT, HEXAGON SOCKET 2209A69H0L (08452)		EA	1					5	40
P20		BEARING, BALL: 5/16 IN. DIA, SS 452A108H01 (08452)		EA	1	*	*	*	*	5	41
P O		SPRING 452A106H01 (08452)		EA	1	*	*	*	2	5	42
P O		O RING: GUN BARREL, 11/32 IN. OD, 7/32 IN. ID AN6227B4 (88044)		EA	1	*	*	*	2	5	43
X20		SCREW, MACHINE: NO. 6-32 THD SIZE, 2 5/8 IN. LG, FILLISTER HEAD 452A103H01 (08452)		EA	3					5	44
P O	5310-010-3319	WASHER, LOCK: BRACKET AND FITTING ASSEMBLY MTG, .141 IN. ID, .253 IN. OD, .031 IN. THK		EA	3	*	*	*	*	5	45
X20		PIN: 1 9/16 IN. LG, 1/8 IN. DIA 452X107H01 (08452)		EA	1					5	46
P O		BUSHING, NYLON 2209A70H01 (08452)		EA	1	2	2	4	8	5	47
P O	5310-010-3319	WASHER, LOCK: BRACKET AND FITTING ASSEMBLY MTG, .141 IN. ID, .253 IN. OD, .031 IN. THK		EA	1	*	*	*	*	5	49
P O		BUSHING, NYLON: INLET GUIDE 2213A42H01 (08452)		EA	1	2	2	4	8	5	50

(1) SMR CODE	(2) FEDERAL STOCK NUMBER	(3) DESCRIPTION REF NUMBER & MFR CODE	(4) USABLE ON CODE	(5) UNIT OF MEAS	(6) QTY INC IN UNIT	(6) 15-DAY ORGANIZATIONAL MAINTENANCE ALW				(7) ILLUS- TRATION (A) FIG NO		(B) ITEM NO
						(A) 1-5	(B) 6-20	(C) 21-50	(D) 51-100	(A) NO	(B) NO	
X20		BRACKET AND FITTING ASSEMBLY 427C605G08 (08452)		EA	1						5	51
X20		BRACKET ASSEMBLY 658C594G01 (08452)		EA	1						5	52
X20		FITTING ASSEMBLY 427C605G04 (08452)		EA	1						5	53
X20		ELBOW, STREET: 1/8 IN. THD, 45 DEG, BRASS 124B (09505)		EA	1						5	54
X20		FITTING, BRASS 419A043H01 (82452)		EA	1						5	55
X20		SEALANT 54-52 (05972)		EA	V							
P O	5310-655-9659	NUT, HEXAGON: ROLL DRIVE, 1/4-20 THD SIZE		EA	1	*	*	*	*		6	12
P O	5310-010-3319	WASHER, LOCK: ROLL DRIVE, 1/4 IN.		EA	1	*	*	*	*		6	13
P O	5310-595-5437	WASHER, FLAT: ROLL DRIVE, .250 IN. ID, .500 IN. OD, .064 IN. THK		EA	1	*	*	*	*		6	14
P O	3431-875-7633	ROLL DRIVE 419A009G01 (08452)		EA	1	*	2	2	3		6	15
P O		HOSE ASSEMBLY, GAS 427C637G13 (08452)		EA	1	*	*	*	*		6	19
P O	3431-875-7624	CABLE ASSEMBLY: CURRENT 310B142G01 (08452)		EA	1	*	*	*	*		6	20
P O	3431-875-7641	BOOT: NEOPRENE 419A046H01 (82452)		EA	1	*	*	*	*		6	21
		GROUP 03 - GAS REGULATOR										
P O	3431-509-2562	REGULATOR: ARGON GAS TWO STAGE W/FLOWMETER HVTSG2325-973 (63026)		EA	1	*	*	*	*		7	1
X1		NUT: BODY 1001-06 (63026)		EA	1						7	2
P O	3431-465-8847	CUP: THORPE TUBE 1002-02 (63026)		EA	1	*	*	*	*		7	3
P20	5330-798-3717	O RING: CUP 1407-21 (63026)		EA	1	*	*	*	*		7	4
P20		GASKET: THORPE TUBE, UPPER 1408-82 (63026)		EA	1	*	*	*	*		7	5
P O	6680-072-6186	TUBE, THORPE 1015-08 (63026)		EA	1	*	*	*	*		7	6
X20		FLOAT 1405-08 (63026)		EA	1						7	7
X20		GASKET: THORPE TUBE, LOWER 1408-25 (63026)		EA	1						7	8
P O	6685-072-6184	GAGE: BRASS CASE 1424-0019 (63026)		EA	1	*	*	*	*		7	9
		GROUP 04 - MISCELLANEOUS COMPONENTS										
X20		CASE, CARRYING 720B083H01 (82452)		EA	1						8	1
X20	3431-875-7655	CABLE ASSEMBLY 59C1598G13 (08452)		EA	1						8	2

(1) SMR CODE	(2) FEDERAL STOCK NUMBER	(3) DESCRIPTION REF NUMBER & MFR CODE	(4) USABLE ON CODE	(5) UNIT OF MEAS	(6) 30-DAY DS MAINT ALLOWANCE (A)	(6) 30-DAY DS MAINT ALLOWANCE (B)	(6) 30-DAY DS MAINT ALLOWANCE (C)	(7) 30-DAY GS MAINT ALLOWANCE (A)	(7) 30-DAY GS MAINT ALLOWANCE (B)	(7) 30-DAY GS MAINT ALLOWANCE (C)	(8) 1-YR ALW PER 100 EQUIP CNTGY	(9) DEPOT MAINT ALW PER 100 EQUIP	(10) ILLUS- TRATION		
													(A)	(B)	(A)
		SECTION V - REPAIR PARTS FOR DS, GS, AND DEPOT MAINTENANCE													
		GROUP 01 - CONTROL MONITOR													
X20		CONTROL ASSEMBLY: AC 483B126G01 (08452)		EA	1									1	1
P20		KNOB: WIRE FEED 24435 (08452)		EA	1	*	*	*	*	*		5	15	1	2
P O	5905-196-2300	RHEOSTAT: 25 WATT, WIRE FEED CONTROL 0149 (44655)		EA	1	*	*	*	*	*	1	10	25	1	3
P O	5305-855-0971	SCREW, SELF-TAPPING: CAUTION FLATE MTG, NO. 6-32 THD SIZE, 1/4 IN. LG MS24629-21 (96906)		EA	8	*	*	*	*	*		1	*	1	4
X20		NAMEPLATE 199P297H01 (88725)		EA	1									1	5
P O	5920-556-0144	FISHHOLDER 342004 (75915)		EA	3	*	*	*	*	*	1	6	9	1	6
P O	5920-280-5062	FUSE: LINE, 2 AMP 312002 (75915)		EA	2	3	6	12	3	6	12	140	80	1	7
P O	5920-142-7383	FUSE: MOTOR, 1 AMP 312001 (75915)		EA	1	2	4	8	2	4	8	90	40	1	8
P O	5305-855-0972	SCREW, SELF-TAPPING: RECEPTACLE MTG, NO. 6-32 THD SIZE, 3/8 IN. LG MS24629-23 (96906)		EA	4	*	*	*	*	*		1	*	1	9
P O		RECEPTACLE: GUN CONTROL CABLE AN3102A20-175 (88044)		EA	1	*	*	2	*	*	2	6	20	1	10
P O	4730-014-0561	LOCKNUT, CONDUIT: 1 1/2 IN.		EA	1	*	*	*	*	*		1	*	1	11
P O	5935-072-6056	RECEPTACLE, FEMALE: CURRENT CABLE PM468 (06352)		EA	1	*	*	2	*	*	2	6	8	1	12
P O	5310-543-4791	NUT, FLAIN, HEXAGON: BRASS MS35690-411 (96906)		EA	1	*	*	*	*	*		1	*	1	13
P O	5310-209-0786	WASHER, LOCK: CURRENT CABLE RECEPTACLE MTG MS35335-33 (96906)		EA	1	*	*	*	*	*		1	*	1	14
X20		TERMINAL 196A033H05 (08452)		EA	4									1	15
P O	5930-875-7882	SWITCH, TOGGLE: CONTROL PANEL LINE 3001 (07903)		EA	1	*	2	2	*	2	2	12	20	1	16
P O	5305-622-9476	SCREW, MACHINE: TERMINAL STRIP MTG, NO. 8-32 THD SIZE, 5/8 IN. LG, FILLISTER HEAD MS35265-16 (96906)		EA	3	*	*	*	*	*		1	*	1	17
P O	5310-012-0622	NUT, FLAIN, HEXAGON: TERMINAL STRIP MTG, CABLE CLAMP MTG, NO. 8-32 THD SIZE MS35649-82 (96906)		EA	5	*	*	*	*	*		1	*	1	18
P O	5310-045-3299	WASHER, LOCK: TERMINAL STRIP MTG, NO. 8 MS35338-42 (96906)		EA	9	*	*	*	*	*		1	*	1	19
P O	5305-622-9478	SCREW, MACHINE: TERMINAL STRIP GROUNDING, CABLE CLAMP MTG, NO. 8-32 THD SIZE, 1 IN. LG MS35265-49 (96906)		EA	2	*	*	*	*	*		1	*	1	20
P O	3431-858-3080	TERMINAL STRIP 210 (08452)		EA	1	*	*	2	*	*		5	5	1	21

(1)	(2)	(3)	(4)	(5)	(6)			(7)			(8)	(9)	(10)		
SMR CODE	FEDERAL STOCK NUMBER	DESCRIPTION	USABLE ON CODE	UNIT OF MEAS	QTY INC IN UNIT	30-DAY DS MAINT ALLOWANCE (A)	(B)	(C)	30-DAY GS MAINT ALLOWANCE (A)	(B)	(C)	1-YR ALW PER 100 EQUIP CNTGY	DEPOT MAINT ALW PER 100 EQUIP	ILLUS-TRATION (A)	ITEM NO (B)
		REF NUMBER & MFR CODE				1-20	21-50	51-100	1-20	21-50	51-100			FIG NO	ITEM NO
P O	5310-559-0070	WASHER, LOCK: TERMINAL STRIP MTG, INTERNAL TOOTH MS35333-38 (96906)	EA	1	*	*	*	*	*	*	*	1	*	1	22
X20		CLAMP, CABLE 1781453 (88725)	EA	4										1	23
X20		STRIP, MARKING 2213A83H01 (08452)	EA	1										1	24
P O	5905-875-7890	RESISTOR: LOAD RELAY TO CONTROL RHEOSTAT, 10 WATT, 5 OHM FR10F (12697)	EA	1	*	2	2	*	2	2	12	20		1	25
X20		TERMINAL: LOAD RELAY RESISTOR 1458309 (88725)	EA	1										1	26
X20		RELIEF, STRAIN: LINE CABLE ASSEMBLY SR6P1 (28520)	EA	1										1	27
P O		CABLE ASSEMBLY, CURRENT 59C1598G13 (08452)	EA	1	*	*	2	*	*	2	10	15		1	28
X20		CABLE, WELDING 59C1598H19 (08452)	EA	1										1	29
X20		TERMINAL 1603078 (88725)	EA	1										1	30
X20		RELIEF, STRAIN: GROUND CABLE ASSEMBLY SR2M1 (28520)	EA	1										1	31
P O	3431-875-7657	CABLE ASSEMBLY: GROUND 432C524G10 (08452)	EA	1	*	*	2	*	*	2	10	15		1	32
X20		CABLE, SINGLE CONDUCTOR 432C524H19 (08452)	EA	1										1	33
X20		TERMINAL 1797746 (88725)	EA	1										1	34
X20		RELIEF, STRAIN: CURRENT CABLE ASSEMBLY SR8P1 (28520)	EA	1										1	35
P O	3431-875-7656	CABLE ASSEMBLY, LINE 435C512G04 (08452)	EA	1	*	*	1	*	*	1	12	15		1	36
P O	5305-855-0972	SCREW, SELF-TAPPING: BASE AND BACK PLATE MTG, NO. 6-32 THD SIZE, 3/8 IN. LG MS24629-23 (96906)	EA	12	*	*	*	*	*	*	1	*		1	37
X20		PANEL, CURRENT 827D037H05 (08452)	EA	1										1	38
X20		BASE, CABINET 827D037H16 (88725)	EA	1										1	39
X20		INCLOSURE 3472D32G01 (08452)	EA	1										1	40
X20		FASTENER A75-40 (72794)	EA	1										1	41
X20		GROMMET JH5 (72794)	EA	1										1	42
X20		GASKET: CONTROL ASSEMBLY DOOR 447910P (88725)	EA	1										1	43
X20		CABINET 3472D32H01 (08452)	EA	1										1	44
P O	5305-855-0972	SCREW, SELF-TAPPING: PANEL ASSEMBLY MTG, UPPER, NO. 6-32 THD SIZE, 3/8 IN. LG MS24629-23 (96906)	EA	2	*	*	*	*	*	*	1	*		2	1

(1) SMR CODE	(2) FEDERAL STOCK NUMBER	(3) DESCRIPTION REF NUMBER & MFR CODE	(4) USABLE ON CODE	(5) UNIT OF MEAS IN UNIT	(6) 30-DAY DS MAINT ALLOWANCE			(7) 30-DAY GS MAINT ALLOWANCE			(8) 1-YR ALW PER 100 EQUIP CNTGY	(9) DEPOT MAINT ALW PER 100 EQUIP	(10) ILLUS- TRATION	
					(A)	(B)	(C)	(A)	(B)	(C)			(A)	(B)
P O	5305-582-5807	SCREW, MACHINE: PANEL ASSEMBLY MTG, LOWER, NO. 6-32 THD SIZE, 3/8 IN. LG MS35265-28 (96906)	EA	5	*	*	*	*	*	*	1	*	2	2
P O	5310-834-3156	NUT, PLAIN, HEXAGON: PANEL ASSEMBLY, NO. 6-32 THD SIZE MS35649-62 (96906)	EA	2	*	*	*	*	*	*	1	*	2	3
P O	5310-045-4007	WASHER, LOCK: PANEL MTG, NO. 6 MS35338-41 (96906)	EA	4	*	*	*	*	*	*	1	*	2	4
X20		PANEL ASSEMBLY 221C652601 (08452)	EA	1									2	5
P O	5305-543-2665	SCREW, MACHINE: FILLISTER HEAD: ARMATURE RESISTOR MTG, 1/4-20 THD SIZE, .37 IN. LG MS35265-77 (96906)	EA	2	*	*	*	*	*	*	1	*	2	6
P O	5310-761-6882	NUT, PLAIN, HEXAGON: ARMATURE RESISTOR MTG, 1/4-20 THD SIZE MS1967-2 (96906)	EA	2	*	*	*	*	*	*	1	*	2	7
P O	5310-582-5965	WASHER, LOCK: ARMATURE RESISTOR MTG, 1/4 IN. MS35338-44 (96906)	EA	2	*	*	*	*	*	*	1	*	2	8
P O	5905-875-7886	RESISTOR: ARMATURE RELAY TO LOAD RELAY, 25, OHM, 25 WATT TYPE66-1-2E (75042)	EA	1	*	2	2	*	2	2	12	20	2	9
P O	5305-069-5122	SCREW, MACHINE, FILLISTER HEAD: CONTROL PANEL RESISTOR (4R) MTG, NO. 8-32 THD SIZE, 2 1/2 IN. LG MS35265-55 (96906)	EA	1	*	*	*	*	*	*	1	*	2	10
P O	5310-012-0622	NUT, PLAIN, HEXAGON: CONTROL PANEL RESISTOR (4R) MTG, NO. 8-32 THD SIZE MS35649-82 (96906)	EA	1	*	*	*	*	*	*	1	*	2	11
P O	5310-045-3299	WASHER, LOCK: CONTROL PANEL RESISTOR (4R) MTG, NO. 8 MS35338-42 (96906)	EA	1	*	*	*	*	*	*	1	*	2	12
P O	5310-809-8544	WASHER, FLAT: CONTROL PANEL RESISTOR (4R) MTG, NO. 8 MS27183-7 (96906)	EA	1	*	*	*	*	*	*	1	*	2	13
X20		WASHER, CORK: CONTROL PANEL RESISTOR (4R) MTG 7249-8 (08452)	EA	2									2	14
P O	5905-875-7887	RESISTOR: CONTROL PANEL VPR20HK (12697)	EA	1	*	2	2	*	2	2	12	20	2	15
P O	5305-855-0972	SCREW, SELF-TAPPING: ADJUSTABLE RESISTOR (2E) MTG, NO. 6-32 THD SIZE, 3/8 IN. LG, PAN HEAD MS24629-23 (96906)	EA	2	*	*	*	*	*	*	1	*	2	16
P O	5905-875-7883	RESISTOR, ADJUSTABLE: MOTOR VOLTAGE SUPPLY, 250 OHMS, 25 WATTS TYPE2DATYPED (75042)	EA	1	*	2	2	*	2	2	12	20	2	17
P O	5910-875-7888	CAPACITOR: 600V, DC (4C,3C) 73P47306 (56289)	EA	2	2	2	4	2	2	4	48	40	2	18
X20		TERMINAL, SPADE: CAPACITOR MOUNTING (3C, 4C AND 5C) 1797751 (88725)	EA	5									2	19
P O		SCREW, TAPPING, THREAD CUTTING: RELAY MTG, NO. 6-32 THD SIZE, 5/8 IN. LG MS24629-25 (96906)	EA	2	*	*	*	*	*	*	1*		2	20

(1) SMR CODE	(2) FEDERAL STOCK NUMBER	(3) DESCRIPTION REF NUMBER & MFR CODE	(4) USABLE ON CODE	(5) UNIT OF MEAS IN UNIT	(6) 30-DAY DS MAINT ALLOWANCE			(7) 30-DAY GS MAINT ALLOWANCE			(8) 1-YR ALW PER 100 EQUIP CNTGTY	(9) DEPOT MAINT ALW PER 100 EQUIP	(10) ILLUS- TRATION	
					(A)	(B)	(C)	(A)	(B)	(C)			(A)	(B)
P O	5945-875-7884	RELAY FR1D (77342)	EA	1	*	*	2	*	*	2	6	10	2	21
P O	5910-845-7400	CAPACITOR: 400V, DC, STANDOFF INSULATOR TO ARMATURE RELAY FJ4F1 (93790)	EA	1	2	2	3	2	2	3	30	20	2	22
P O	5310-013-4530	NUT, FLAIN, HEXAGON: STANDOFF INSULATOR, NO. 6-32 THD SIZE MS35649-62 (96906)	EA	1	REF	REF	REF	REF	REF	REF	REF	REF	2	23
P O	5310-045-4007	WASHER, LOCK: STANDOFF INSULATOR, NO. 6 (5C) MS27183-6 (96906)	EA	1	REF	REF	REF	REF	REF	REF	REF	REF	2	24
P O	5310-082-1404	WASHER, FLAT: CAPACITOR MTG, NO. 6 (5C) MS27183-6 (96906)	EA	1	*	*	*	*	*	*	1	*	2	25
X20		INSULATOR, STANDOFF: CAPACITOR MOUNTING (5C) 1581 (71279)	EA	1									2	26
P O	5310-013-4530	NUT, FLAIN, HEXAGON: RECTIFIER ASSEMBLY (1RX) MTG, NO. 6-32 THD SIZE MS35649-62 (96906)	EA	3	*	*	*	*	*	*	1	*	2	27
P O	5310-045-4007	WASHER, LOCK: RECTIFIER ASSEMBLY (1RX) MTG, NO. 6 MS35338-41 (96906)	EA	3	*	*	*	*	*	*	1	*	2	28
X20		RECTIFIER ASSEMBLY 2213A04G01 (08452)	EA	1									2	29
P O		DIODE 1N4822 (08452)	EA	4	2	2	3	2	2	3	30	40	2	30
X20		TERMINAL, PUSH IN TYPE9-4 (82893)	EA	4									2	31
X20		FLATE 2213A03H01 (08452)	EA	1									2	32
X20		SPACER, PHENOLIC TUBING: RECTIFIER ASSEMBLY (1RX) MTG 465A288H02 (08452)	EA	1									2	33
P O	5305-984-6221	SCREW, MACHINE: RECTIFIER ASSEMBLY (1RX) MTG, NO. 6-32 THD SIZE, 1 IN. PAN HEAD MS35206-234 (96909)	EA	1	*	*	*	*	*	*	1	*	2	34
P O	5305-855-0974	SCREW, SELF-TAPPING: ARMATURE RELAY MTG, NO. 6-32 THD SIZE, 5/8 IN. LG, PAN HEAD MS24629-25 (96906)	EA	2	*	*	*	*	*	*	1	*	2	35
P O	5945-846-0433	RELAY: ARMATURE FR1D (77342)	E	1	*	*	2	*	*	2	6	10	2	36
X20 R	3431-446-1961	CONTACTOR ASSEMBLY 31D9649COMBB00 (08452)	EA	1									3	1
X2F	5305-639-4868	SCREW, MACHINE: LEAD ATTACHING, NO. 10-32 THD SIZE, 1/4 IN. LG, BRASS	EA	1									3	2
P F	5310-576-5752	WASHER, LOCK: HEAD MTG, .200 IN. ID .373 IN. OD, .023 IN. THK, INTERNAL TOOTH MS35333-39 (96906)	EA	3	*	*	*	*	*	*	1*		3	3
X1		BOX ASSEMBLY: ARC, 100 AMP 1490517 (08452)	EA	1									3	4
X2F	5305-286-1494	SCREW, MACHINE: ARMATURE FLATE MTG, 1/4-20 THD SIZE, 1/2 IN. LG 103184 (08452)	EA	2									3	5

(1)	(2)	(3)	(4)	(5)	(6) 30-DAY DS MAINT ALLOWANCE			(7) 30-DAY GS MAINT ALLOWANCE			(8)	(9)	(10)		
SMR CODE	FEDERAL STOCK NUMBER	DESCRIPTION REF NUMBER & MFR CODE	USABLE ON CODE	UNIT OF MEAS	QTY INC IN UNIT	(A)	(B)	(C)	(A)	(B)	(C)	1-YR ALW PER 100 EQUIP CNTGY	DEPOT MAINT ALW PER 100 EQUIP	ILLUS- TRATION (A)	(B)
						1-20	21-50	51-100	1-20	21-50	51-100			FIG NO	ITEM NO
P F	5310-582-5965	WASHER, LOCK: CONTACT PLATE MTG, .255 IN. ID, .493 IN. OD, .062 IN. THK MS35338-44 (96906)	EA	1	*	*	*	*	*	*	*	1	*	3	6
P F	5310-823-8804	WASHER, FLAT: CONTACT MTG, .255 IN. ID, .500 IN. OD, .049 IN. THK MS27183-9 (96906)	EA	1	*	*	*	*	*	*	*	1	*	3	7
P F	5340-417-8878	SPRING, KICKOUT 1289441 (08452)	EA	2	2	2	3	2	2	3	30	20	3	8	
XI		PLATE, ARMATURE: 1257344 (08452)	EA	1										3	9
P F	5340-512-9403	SPRING, CONTACT 1490698 (08452)	EA	1	*	*	2	*	*	2	6	10	3	10	
P F	6110-525-3067	CONTACT, MOVING: 100 AMP 1490515 (08452)	EA	1	*	*	2	*	*	2	6	10	3	11	
X2F	5305-639-4845	SCREW, MACHINE: CONTACT MTG, 1/4-28 THD SIZE, 3/8 IN. LG 1355076 (08452)	EA	2										3	12
P F	5310-582-5965	WASHER, LOCK: CONTACT MTG, .255 IN. ID, .493 IN. OD, .062 IN. THK MS35338-44 (96906)	EA	1	*	*	*	*	*	*	*	1	*	3	13
P F	5310-823-8804	WASHER, FLAT: CONTACT PLATE MTG, .255 IN. ID, .500 IN. OD, .049 IN. THK MS27183-9 (96906)	EA	1	*	*	*	*	*	*	*	1	*	3	14
P F	6110-525-3068	CONTACT, STATIONARY: 100 AMP 1490516 (08452)	EA	1	*	*	2	*	*	2	6	10	3	15	
X2F	5305-017-7355	SCREW, MACHINE: COIL MTG, 1/4-20 THD SIZE, 1/2 IN. LG	EA	1										3	16
P F	5310-550-1130	WASHER, LOCK: COIL MTG, .262 IN. ID, .469 IN. OD, .025 IN. THK, INTERNAL TOOTH MS35333-40 (96906)	EA	1	*	*	*	*	*	*	*	1	*	3	17
P F	5310-167-0766	WASHER, FLAT: 1/4 IN. ID, 1 1/8 IN. OD, .063 IN. THK	EA	1	*	*	*	*	*	*	*	1	*	3	18
P F	5950-779-7302	COIL: BLACK, NO. 2, COMBINATION B 1490640 (08452)	EA	1	*	*	2	*	*	2	6	10	3	19	
X2F		WASHER: COIL RETAINING 14869999 (08452)	EA	1										3	20
XI		TERMINAL: FRONT 13B5866G02 (08452)	EA	2										3	21
X2F	5305-013-2124	SCREW, MACHINE: CONTACT TO MTG PLATE, NO. 10-32 THD SIZE, 3/4 IN. LG	EA	2										3	22
P F	5310-045-3299	WASHER, LOCK: CONTACTOR MTG, .168 IN. ID, .296 IN. OD, .040 IN. THK MS35338-42 (96906)	EA	2	*	*	*	*	*	*	*	1	*	3	23
P F	5310-167-0765	WASHER, FLAT: CONTACTOR MTG, .194 IN. ID, 7/8 IN. OD, 1/16 IN. THK	EA	2	*	*	*	*	*	*	*	1	*	3	24
P O	5305-068-0511	SCREW, CAP, HEXAGON HEAD: CONTACTOR PANEL MTG, 3/8-16 THD SIZE, 1 1/4 IN. LG MS90728-62 (96906)	EA	2	*	*	*	*	*	*	*	1	*	3	25
P O	5310-595-7237	WASHER, LOCK: CONTACTOR PANEL MTG, 3/8 IN., INTERNAL TOOTH MS35333-42 (96906)	EA	2	*	*	*	*	*	*	*	1	*	3	26

(1)	(2)	(3)	(4)	(5)	(6)			(7)			(8)	(9)	(10)	
SMR CODE	FEDERAL STOCK NUMBER	DESCRIPTION	USABLE ON CODE	UNIT OF MEAS	30-DAY DS ALLOWANCE (A)	30-DAY DS MAINT ALLOWANCE (B)	30-DAY DS MAINT ALLOWANCE (C)	30-DAY GS MAINT ALLOWANCE (A)	30-DAY GS MAINT ALLOWANCE (B)	30-DAY GS MAINT ALLOWANCE (C)	1-YR ALW PER 100 EQUIP CNTGY	DEPOT MAINT ALW PER 100 EQUIP	ILLUS-TRATION (A)	ITEM (B)
		REF NUMBER & MFR CODE		IN UNIT	1-20	21-50	51-100	1-20	21-50	51-100			FIG NO	ITEM NO
X20		FISHPAPER: CONTACTOR MTG PANEL TO CONTROL PANEL 448A043H02 (08452)		EA 1									3	27
P O	5306-226-4827	SCREW, CAP, HEXAGON HEAD: CONTACTOR MTG, 5/16-18 THD SIZE, 1 IN. LG MS90728-34 (96906)		EA 1	*	*	*	*	*	*	1	*	3	28
X20		BUSHING, INSULATING: CONTACTOR MTG 2213A87H01 (08452)		EA 2									3	29
P O	5310-809-4085	WASHER, FLAT: CONTACTOR MTG, 7/16 IN. ID MS27183-16 (96906)		EA 2	*	*	*	*	*	*	1	*	3	30
P O	5310-880-7744	NUT, FLAIN, HEXAGON: CONTACTOR MTG, 5/16-18 THD SIZE MS51967-5 (96906)		EA 1	*	*	*	*	*	*	1	*	3	31
X20		NUT, WELL: CONTACTOR MTG, W/INSERT 419A065H01 (08452)		EA 2									3	32
X20		PANEL: CONTACTOR MTG 637C251H01 (08452)		EA 1									3	33
X20		FISHPAPER: CONTACTOR FRAME TO MTG PANEL 448A043H01 (08452)		EA 1									3	34
P O	5305-582-5808	SCREW, MACHINE: LOAD RELAY ASSEMBLY MTG, NO. 6-32 THD SIZE, 5/8 IN. LG, FILLISTER HEAD MS35265-31 (96906)		EA 2	*	*	*	*	*	*	1	*	4	1
P O	5310-834-3156	NUT, FLAIN, HEXAGON: RELAY ASSEMBLY MTG, NO. 6-32 THD SIZE MS35649-62 (96906)		EA 1	*	*	*	*	*	*	1	*	4	2
P O	5310-045-4007	WASHER, LOCK: RELAY ASSEMBLY MTG, NO. 6 MS35338-41 (96906)		EA 1	*	*	*	*	*	*	1	*	4	3
P O	5945-875-7889	RELAY ASSEMBLY 320B224G01 (08452)		EA 1	*	*	1	*	*	1	9	15	4	4
X20		TERMINAL 320B222H02 (08452)		EA 1									4	5
P O	5910-060-3911	CAPACITOR, ELECTROLYTIC: LOAD RELAY TO GUN RECEPTACLE BR30015 (14655)		EA 1	*	*	2	*	*	2	6	20	4	6
P O	5305-543-2023	SCREW, MACHINE: CAPACITOR CLIP MTG, NO. 6-32 THD SIZE, 3/16 IN. LG, FILLISTER HEAD MS35265-25 (96906)		EA 1	*	*	*	*	*	*	1	*	4	7
P O	5310-834-3156	NUT, FLAIN, HEXAGON: CAPACITOR MTG, NO. 6-32 THD SIZE MS35649-62 (96906)		EA 1	*	*	*	*	*	*	1	*	4	8
X20		CLIP: CAPACITOR MTG UMC16 (56289)		EA 1									4	9
M O		HARNES ASSEMBLY 2212A14G01 (08452) MANUFACTURE FROM:		EA 1										
P20		WIRE, 34 FT REQUIRED, P/N 1553 (92194)			*	*	*	*	*	*				
P20		TERMINAL, SPADE, .190 STUD, 29 EA, P/N 1603091 (88725)			*	*	*	*	*	*				
P20		TERMINAL, 2 EA, P/N 196A033H05 (08452)			*	*	*	*	*	*				

(1)	(2)	(3)	(4)	(5)	(6)			(7)			(8)	(9)	(10)	
SMR CODE	FEDERAL STOCK NUMBER	DESCRIPTION	USABLE ON CODE	UNIT OF MEAS	30-DAY DS MAINT ALLOWANCE (A)	(B)	(C)	30-DAY GS MAINT ALLOWANCE (A)	(B)	(C)	1-YR ALW PER 100 EQUIP CNTGY	DEPOT MAINT ALW PER 100 EQUIP	ILLUS-TRATION (A)	(B)
		REF NUMBER & MFR CODE		UNIT INC	1-20	21-50	51-100	1-20	21-50	51-100			FIG NO	ITEM NO
		GROUP 02 - WELDING GUN												
X20		GUN ASSEMBLY, WELDING 483B128G01 (08452)		EA 1									5	1
P O	5305-582-5807	SCREW, MACHINE: NO. 6-32 THD SIZE, 3/8 IN. LG. FILLISTER HEAD MS35265-28 (96906)		EA 2	*	*	*	*	*	*	1	*	5	2
P O	5310-010-3319	WASHER, LOCK: SHIELD TO BRACKET MTG. .141 IN. ID. .253 IN. OD, .031 IN. THK		EA 3	*	*	*	*	*	*	1	*	5	3
P O	5310-082-1404	WASHER, FLAT: SHIELD TO BRACKET MTG. .156 IN. ID. .375 IN. OD, .049 IN THK		EA 3	*	*	*	*	*	*	1	*	5	4
X20		BOLT: REEL COVER 419A029H01 (08452)		EA 1									5	5
P O	3438-875-7652	COVER, PLASTIC: WIRE REEL 637C247H01 (08452)		EA 1	*	*	2	*	*	2	6	15	5	6
P O	5305-984-5676	SCREW, MACHINE: REEL SHAFT MTG, 5/16-18 THD SIZE, 3/4 IN. LG MS35206-296 (96906)		EA 1	*	*	*	*	*	*	1	*	5	7
P O	3431-446-2639	O RING: REEL COVER BOLT 6227-3 (97073)		EA 1	1	1	3	1	1	3	30	50	5	8
X20		SHAFT, REEL 448A024H01 (08452)		EA 1									5	9
P O	5310-639-1532	WASHER, FLAT: REEL SPACER, .313 IN. ID. .875 IN. OD, .065 IN. THK		EA 1	*	*	*	*	*	*	1	*	5	10
X20		PLUG, SNAP BUTTON 652 (83330)		EA 1									5	11
P O	5305-855-0972	SCREW, SELF-TAPPING: BRAKE SUPPORT MTG. NO. 6-32 THD SIZE, 3/8 IN. LG. PAN HEAD MS24629-23 (96906)		EA 2	*	*	*	*	*	*	1	*	5	12
P O	5310-010-3319	WASHER, LOCK: BRAKE SUPPORT MTG, .141 IN. ID. .253 IN. OD, .031 IN. THK		EA 2	*	*	*	*	*	*	1	*	5	13
P O	5310-082-1404	WASHER, FLAT: BRAKE SUPPORT MTG, .156 IN. ID. .375 IN. OD, .049 IN. THK		EA 2	*	*	*	*	*	*	1	*	5	14
X20		SUPPORT, WIRE REEL BRAKE 419A008H01 (08452)		EA 1									5	15
P O	5305-855-0968	SCREW, SELF-TAPPING: BRAKE TO. BRAKE SUPPORT. NO. 4-40 THD SIZE, 1/4 IN. LG. PAN HEAD MS24629-10 (96906)		EA 2	*	*	*	*	*	*	1	*	5	16
P O	3431-446-2643	BRAKE, REEL 419A011H01 (08452)		EA 1	*	*	2	*	*	2	9	15	5	17
P O	5325-281-3536	BUSHING, RUBBER 282498 (88725)		EA 1	*	*	*	*	*	*	5	40	5	18
X20		SHIELD: REEL COVER 3472D41G01 (08452)		EA 1									5	19
P O	5305-614-0247	SCREW, MACHINE: BEARING ARM MTG. NO. 10-32 THD SIZE, 5/8 IN. LG		EA 1	*	*	*	*	*	*	1	*	5	20
P O	3431-875-7644	SWING ARM ASSEMBLY 310B141G01 (08452)		EA 1	*	*	*	*	*	*	4	25	5	21
P O	3431-875-7646	SCREW, NYLON: IDLER ROLL MTG, NO. 10-32 THD SIZE, 5/8 IN. LG 442A169H01 (08452)		EA 1	*	2	2	*	2	2	15	30	5	22

(1) SMR CODE	(2) FEDERAL STOCK NUMBER	(3) DESCRIPTION REF NUMBER & MFR CODE	(4) USABLE ON CODE	(5) UNIT OF MEAS IN UNIT	(6) 30-DAY DS MAINT ALLOWANCE			(7) 30-DAY GS MAINT ALLOWANCE			(8)	(9)	(10)	
					(A)	(B)	(C)	(A)	(B)	(C)	1-YR ALW PER 100 EQUIP CNTGY	DEPOT MAINT ALW PER 100 EQUIP	ILLUS- TRATION (A)	(B)
P O	3431-446-2641	WASHER, FIBER: IDLER ROLL MTG 310B141H04 (08452)	EA	2	2	2	3	2	2	3	40	80	5	23
P O	3431-875-7645	BEARING, BALL: IDLER ROLL KP3A (21335)	EA	1	*	2	2	*	2	2	20	40	5	24
X20		ARM, BEARING 419A026H02 (08452)	EA	1									5	25
X20		BOLT, BEARING ARM: WIRE PRESSURE ADJUSTING 419A025H01 (08452)	EA	1									5	26
P O	3431-875-7648	SPRING: WIRE PRESSURE ADJUSTING 419A027H01 (08452)	EA	1	*	2	2	*	2	2	20	30	5	27
P O	3431-446-2639	O RING: BEARING ARM MTG 6227-3 (97073)	EA	1	*	*	*	*	*	*	*	*	5	28
P O	3431-446-2642	NOZZLE, GAS 311B703H02 (08452)	EA	1	2	3	5	2	3	5	60	95	5	29
P O	3431-875-7635	KNOB 422A505G01 (08452)	EA	1	*	*	*	*	*	*	2	10	5	30
X20		TUBE, GUN: BARREL HSG 453A483H01 (08452)	EA	1									5	31
P O	3431-875-7930	ADAPTER: GUN TUBE TO NOZZLE 419A003H01 (08452)	EA	1	*	2	2	*	2	2	15	25	5	32
P O	3431-446-2644	TUBE, GUIDE 306B172H09 (08452)	EA	1	12	26	50	12	26	50	600	100	5	33
X20		BARREL ASSEMBLY, GUN 419A002G02 (08452)	EA	1									5	34
P O	3431-875-7642	INSULATION: GUN BARREL 419A005H02 (08452)	EA	1	1	1	3	1	1	3	30	6	5	35
P O	3431-875-7638	WASHER: BARREL TO ADAPTER 419A006H02 (08452)	EA	1	*	*	2	*	*	2	7	15	5	36
P O	3431-875-7637	WASHER: BARREL TO BRACKET ASSEMBLY, BARREL TO ADAPTER 419A006H01 (08452)	EA	2	*	2	2	*	2	2	15	35	5	37
P O	5305-253-3756	SETSCREW: BARREL ASSEMBLY, 1/4-20 THD SIZE, 1/4 IN. LG, HALF TORX POINT SOCKET MS51041-49 (96906)	EA	1	*	*	*	*	*	*	1		5	38
X20		INSULATION 419A010H01 (08452)	EA	1									5	39
X20		FLUX, PIPE: 1/8 IN. NPT, HEXAGON SOCKET 2209A69H0L (08452)	EA	1									5	40
P20		BEARING, BALL: 5/16 IN. DIA, SS 452A108H01 (08452)	EA	1	*	*	*	*	*	*	5	5	5	41
P O		SPRING 452A106H01 (08452)	EA	1	*	2	2	*	2	2	15	30	5	42
P O		O RING: GUN BARREL, 11/32 IN. OD, 7/32 IN. ID AN6227B4 (88044)	EA	1	*	2	2	*	2	2	15	100	5	4
X20		SCREW, MACHINE: NO. 6-32 THD SIZE, 2 5/8 IN. LG, FILLISTER HEAD 452A103H01 (08452)	EA	3									5	41
P O	5310-010-3319	WASHER, LOCK: BRACKET AND FITTING ASSEMBLY MTG, .141 IN. ID, .253 IN. OD, .031 IN. THK	EA	3	*	*	*	*	*	*	1	*	5	4
X20		PIN: 1 9/16 IN. LG, 1/8 IN. DIA 452A107H01 (08452)	EA	1									5	4

(1)	(2)	(3)	(4)	(5)	(6)			(7)			(8)	(9)	(10)		
SMR CODE	FEDERAL STOCK NUMBER	DESCRIPTION	USABLE ON CODE	UNIT OF MEAS	QTY INC IN UNIT	30-DAY DS MAINT ALLOWANCE (A)	(B)	(C)	30-DAY GS MAINT ALLOWANCE (A)	(B)	(C)	1-YR ALW PER 100 EQUIP CNTGY	DEPOT MAINT ALW PER 100 EQUIP	ILLUS-TRATION (A)	(B)
		REF NUMBER & MFR CODE				1-20	21-50	51-100	1-20	21-50	51-100			FIG NO	ITEM NO
P O		BUSHING, NYLON 2209A7OH01 (08452)	EA	1	4	8	17	4	8	17	200	90	5	47	
P F	5305-614-0266	SCREW, MACHINE: NO. 6-32 THD SIZE, 7/8 IN. LG, FILLISTER HEAD MS35265-33 (96906)	EA	1	*	*	*	*	*	*	1	*	5	48	
P O	5310-010-3319	WASHER, LOCK: BRACKET AND FITTING ASSEMBLY MTG., .141 IN. ID, .253 IN. OD, .031 IN. THK	EA	1	*	*	*	*	*	*	1	*	5	49	
P O		BUSHING, NYLON: INLET GUIDE 2213A4ZH01 (08452)	EA	1	4	8	17	4	8	17	200	90	5	50	
X20		BRACKET AND FITTING ASSEMBLY 427C605G08 (08452)	EA	1										5	51
X20		BRACKET ASSEMBLY 658C594G01 (08452)	EA	1										5	52
X20		FITTING ASSEMBLY 427C605G04 (08452)	EA	1										5	53
X20		ELBOW, STREET: 1/8 IN. THD, 45 DEG, BRASS 124B (09505)	EA	1										5	54
X20		FITTING, BRASS 419A043H01 (08452)	EA	1										5	55
X20		SEALANT 54-52 (05972)	EA	V											
X2F		HANDLE ASSEMBLY, GUN 301B663G03 (08452)	EA	1										6	1
P F	5305-582-5808	SCREW, MACHINE: NO. 6-32 THD SIZE, 5/8 IN. LG MS35265-31 (96906)	EA	1	*	*	*	*	*	*	1	*	6	2	
P F	5305-616-2529	SCREW, MACHINE: HANDLE MTG, NO. 6-32 THD SIZE, 3/8 IN. LG	EA	3	*	*	*	*	*	*	1	*	6	3	
X2F		HANDLE: RIGHT 827D099G02 (08452)	EA	1										6	4
X2F		HANDLE: LEFT 827D099G01 (08452)	EA	1										6	5
X2F		TRIGGER ASSEMBLY 451A241G01 (08452)	EA	1										6	6
P F		SPRING, HELICAL, COMPRESSION: TRIGGER 453A464H01 (08452)	EA	1	*	2	2	*	2	2	15	25	6	7	
P F	5305-282-8904	SETScrew: NO. 6-32 THD SIZE, 3/8 IN. LG, HEXAGON SOCKET CUP POINT MS51021-25 (96906)	EA	1	*	*	*	*	*	*	1	*	6	8	
P F	3431-446-2637	SPRING: TRIGGER 205A091H01 (08452)	EA	1	*	2	2	*	2	2	15	25	6	9	
P F	5930-875-7879	SWITCH: TRIGGER 1SM1 (91929)	EA	1	2	2	3	2	2	3	25	35	6	10	
P F	5930-729-8720	SWITCH, INCHING 1FB5 (91929)	EA	1	2	2	2	2	2	2	25	35	6	11	
P O	5310-655-9659	NUT, HEXAGON: ROLL DRIVE, 1/4-20 THD SIZE	EA	1	*	*	*	*	*	*	1	*	6	12	
P O	5310-010-3319	WASHER, LOCK: ROLL DRIVE, 1/4 IN.	EA	1	*	*	*	*	*	*	1	*	6	13	
P O	5310-595-5437	WASHER, FLAT: ROLL DRIVE, .250 IN. ID, .500 IN. OD, .064 IN. THK	EA	1	*	*	*	*	*	*	1	*	6	14	
P O	3431-875-7633	ROLL DRIVE 419A09G01 (08452)	EA	1	2	3	5	2	3	5	60	50	6	15	

(1)	(2)	(3)	(4)	(5)	(6)			(7)			(8)	(9)	(10)		
SMR CODE	FEDERAL STOCK NUMBER	DESCRIPTION	USABLE ON CODE	UNIT OF MEAS	QTY INC	30-DAY DS MAINT ALLOWANCE			30-DAY GS MAINT ALLOWANCE			1-YR ALW PER 100 EQUIP CNTGY	DEPOT MAINT ALW PER 100 EQUIP	ILLUS-TRATION (A)	ITEM (B)
		REF NUMBER & MFR CODE				(A)	(B)	(C)	(A)	(B)	(C)				
P F		CABLE ASSEMBLY, CONTROL 311B796G01 (08452)	EA	1	*	*	2	*	*	2	10	35	6	16	
P F	5910-875-7880	CAPACITOR 121P47302S2 (56289)	EA	1	*	2	2	*	2	2	12	20	6	17	
X2F		SLEEVING: MOTOR LEAD 422A484H02 (08452)	EA	2										6	18
P O		HOSE ASSEMBLY, GAS 427C637G13 (08452)	EA	1	*	*	2	*	*	2	10	35	6	19	
P O	3431-875-7624	CABLE ASSEMBLY: CURRENT 310B142G01 (08452)	EA	1	*	*	2	*	*	2	10	35	6	20	
P O	3431-875-7641	BOOT: NEOPRENE 419A046H01 (08452)	EA	1	*	*	2	*	*	2	9	25	6	21	
X2F		INSULATOR, MOTOR 222A550H01 (08452)	EA	1										6	22
X2F		INSULATION, MOTOR 31762 (00779)	EA	1										6	23
P F	3431-875-7632	MOTOR ASSEMBLY 429C50G05 (08452)	EA	1	*	*	2	*	2	2	15	30	6	24	
		GROUP 03 - GAS REGULATOR													
P O	3431-509-2562	REGULATOR: ARGON GAS TWO STAGE W/ FLOWMETER HVFSG2325-973 (63026)	EA	1	*	*	2	*	*	2	8	20	7	1	
X1		NUT: BODY 1001-06 (63026)	EA	1										7	2
P O	3431-465-8847	CUP: THORPE TUBE 1002-02 (63026)	EA	1	*	*	2	*	*	2	10	10	7	3	
P20	5330-798-3717	O RING: CUP 1407-21 (63026)	EA	1	*	*	*	*	*	*	5	5	7	4	
P20		GASKET: THORPE TUBE, UPPER 1408-82 (63026)	EA	1	*	*	*	*	*	*	5	5	7	5	
P O	6680-072-6186	TUBE, THORPE 1015-08 (63026)	EA	1	*	*	2	*	*	2	10	10	7	6	
X20		FLOAT 1405-08 (63026)	EA	1										7	7
X20		GASKET: THORPE TUBE, LOWER 1408-25 (63026)	EA	1										7	8
P O	6685-072-6184	GAGE: BRASS CASE 1424-0019 (63026)	EA	1	*	*	2	*	*	2	10	25	7	9	
		GROUP 04 - MISCELLANEOUS COMPONENTS													
X20		CASE, CARRYING 720B0883H01 (08452)	EA	1										8	1
X20	3431-875-7655	CABLE ASSEMBLY 59C1598G13 (08452)	EA	1										8	2

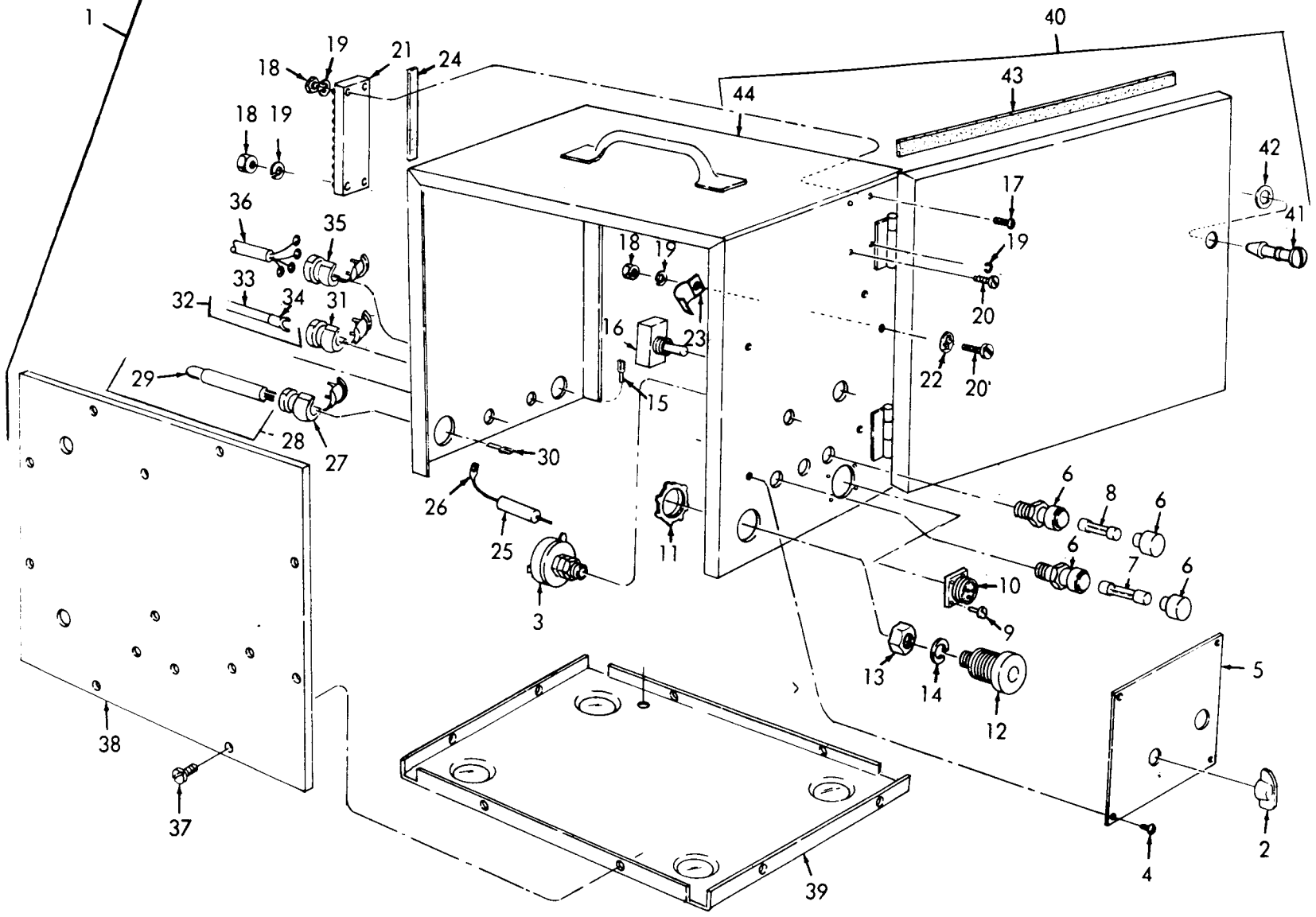
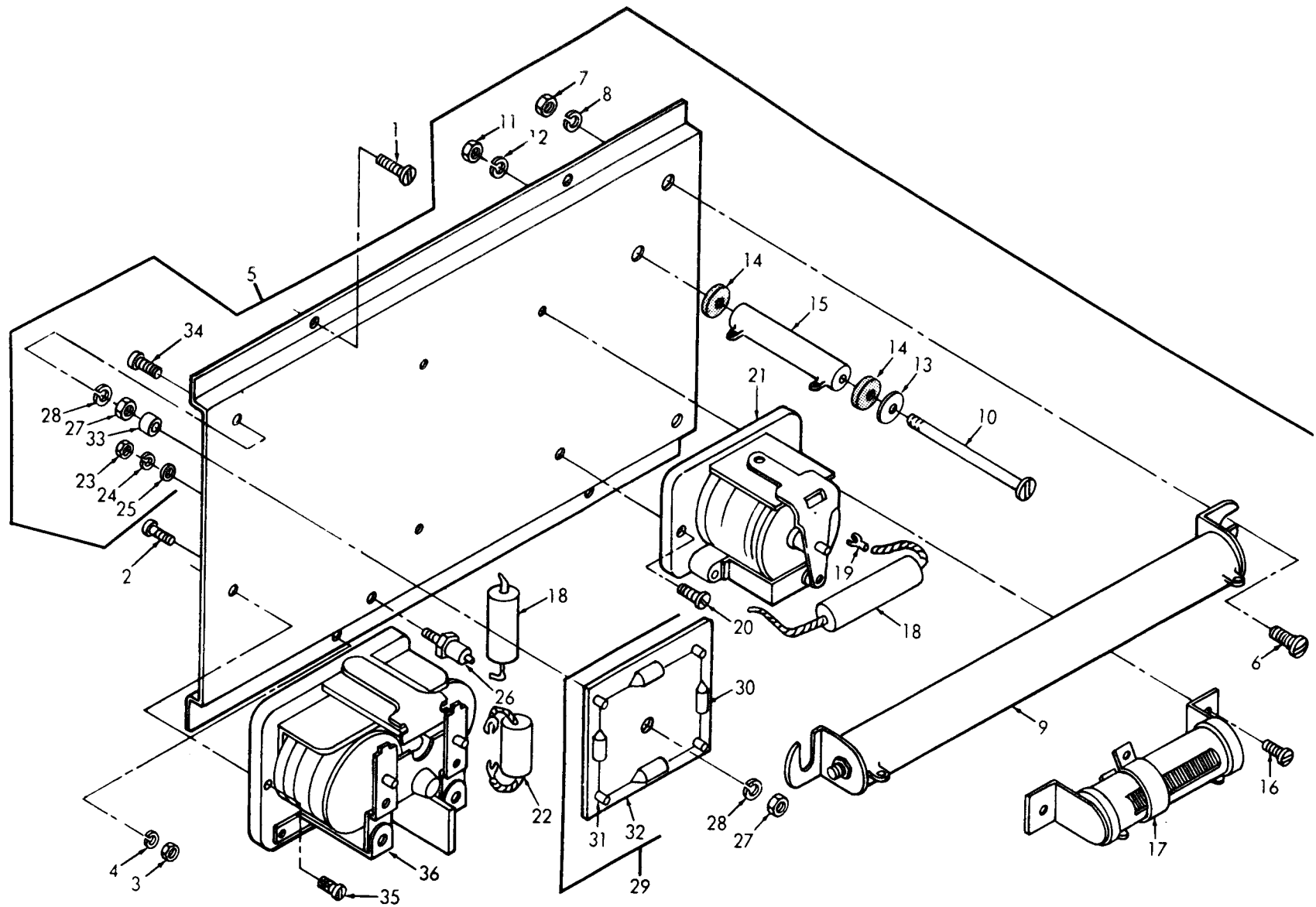


Figure 1. Control

ME 3431-227-24P/1



ME 3431-227-24P/2

Figure 2. Panel

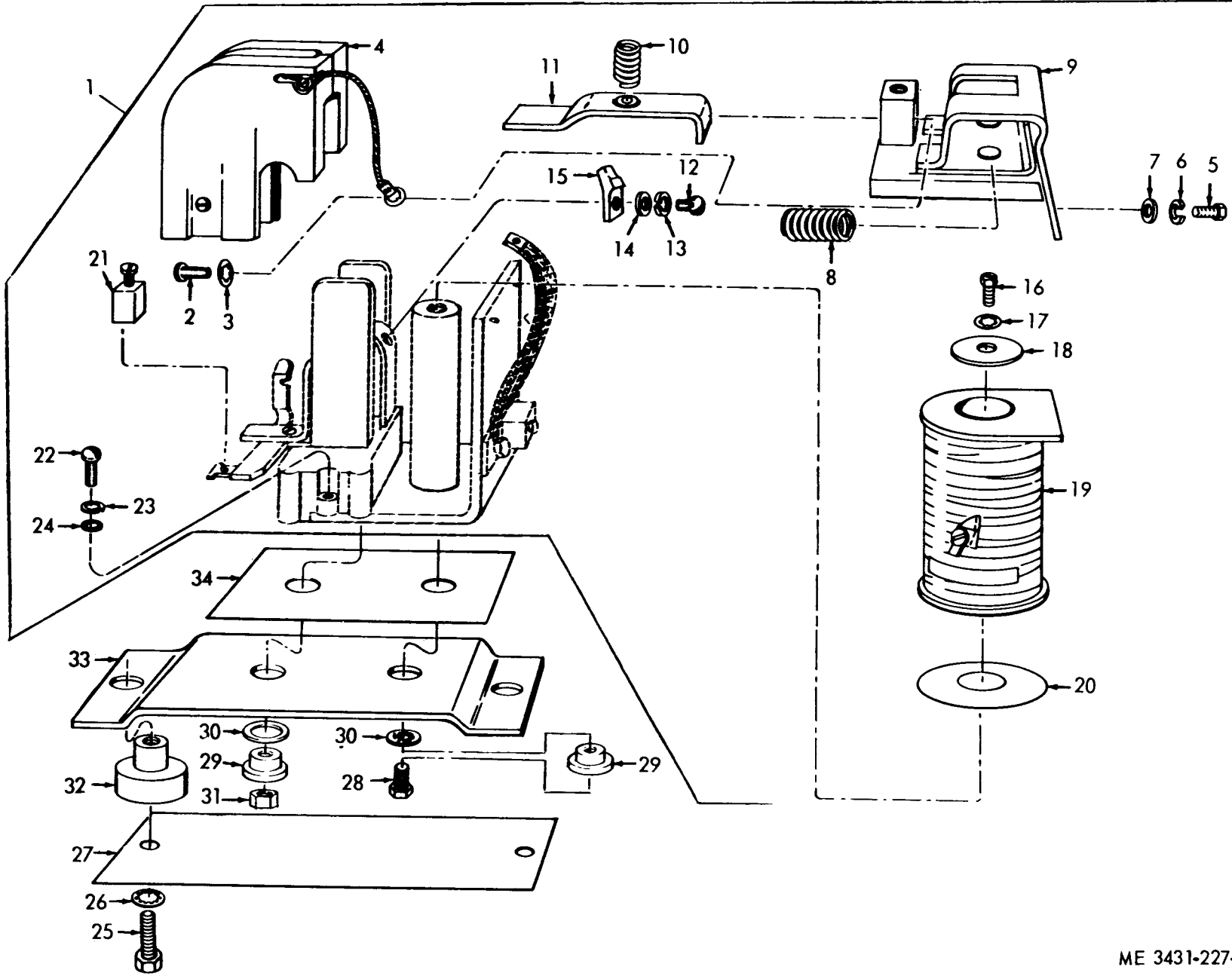
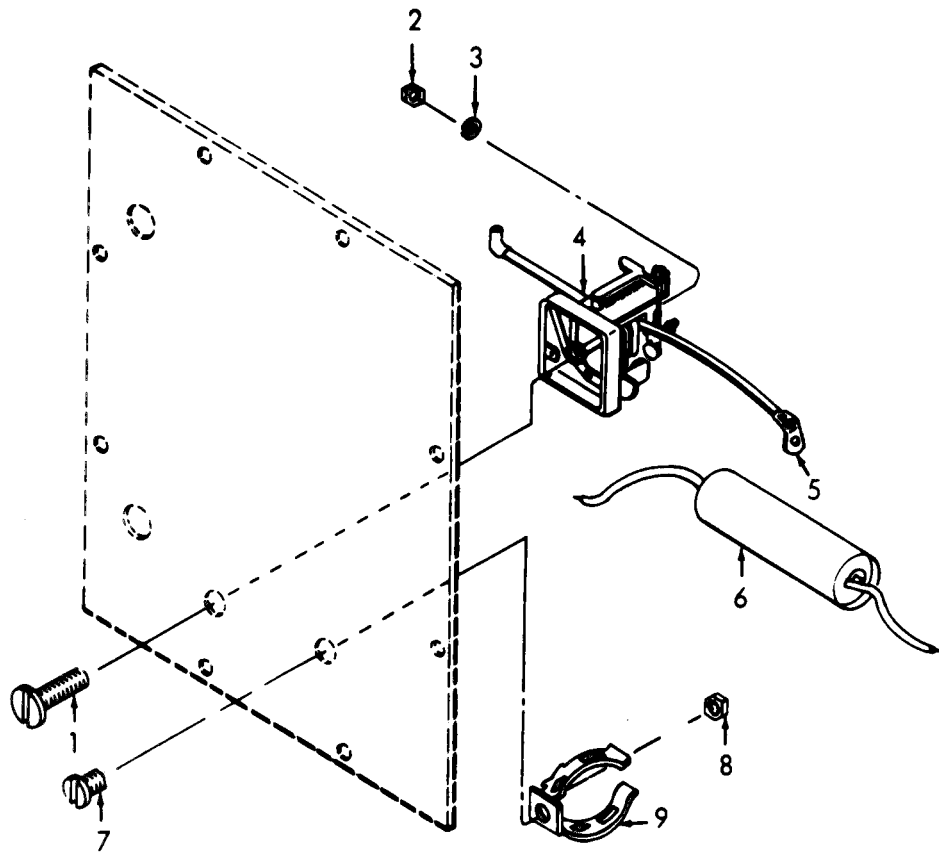
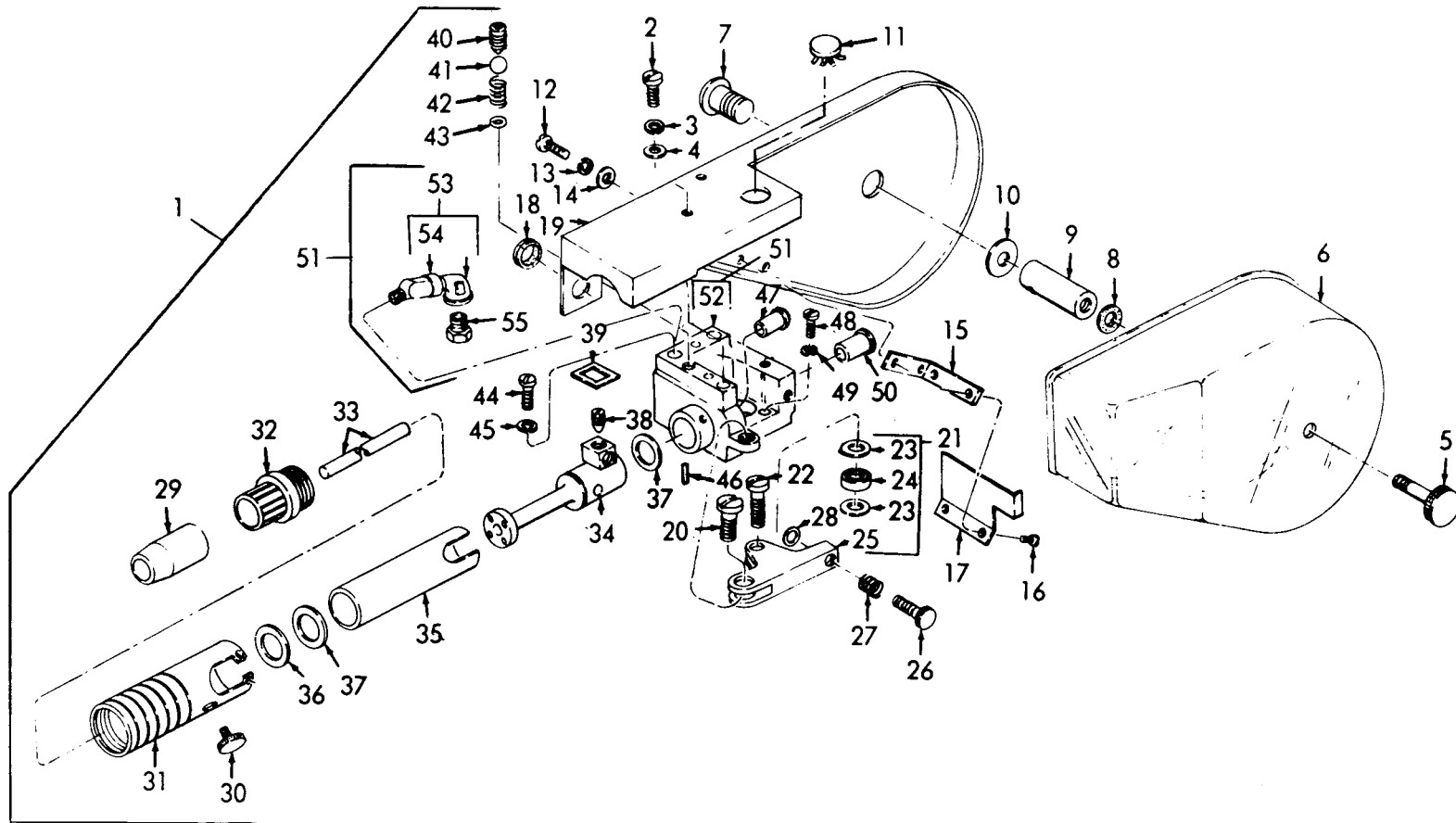


Figure 3. Contactor



ME 3431-227-24P/4

Figure 4. Load Relay and Capacitor



ME 3431-227-24P/5

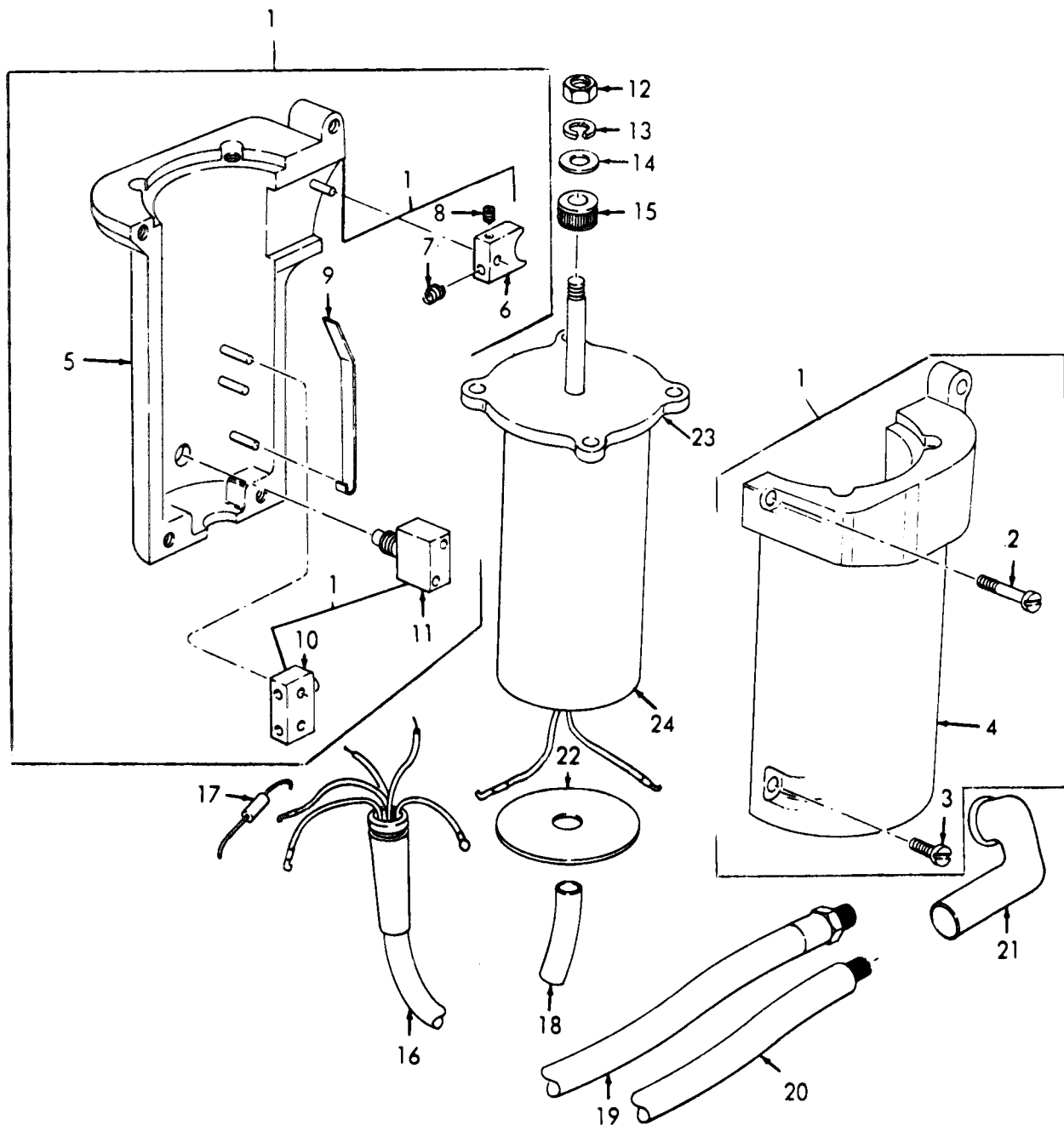
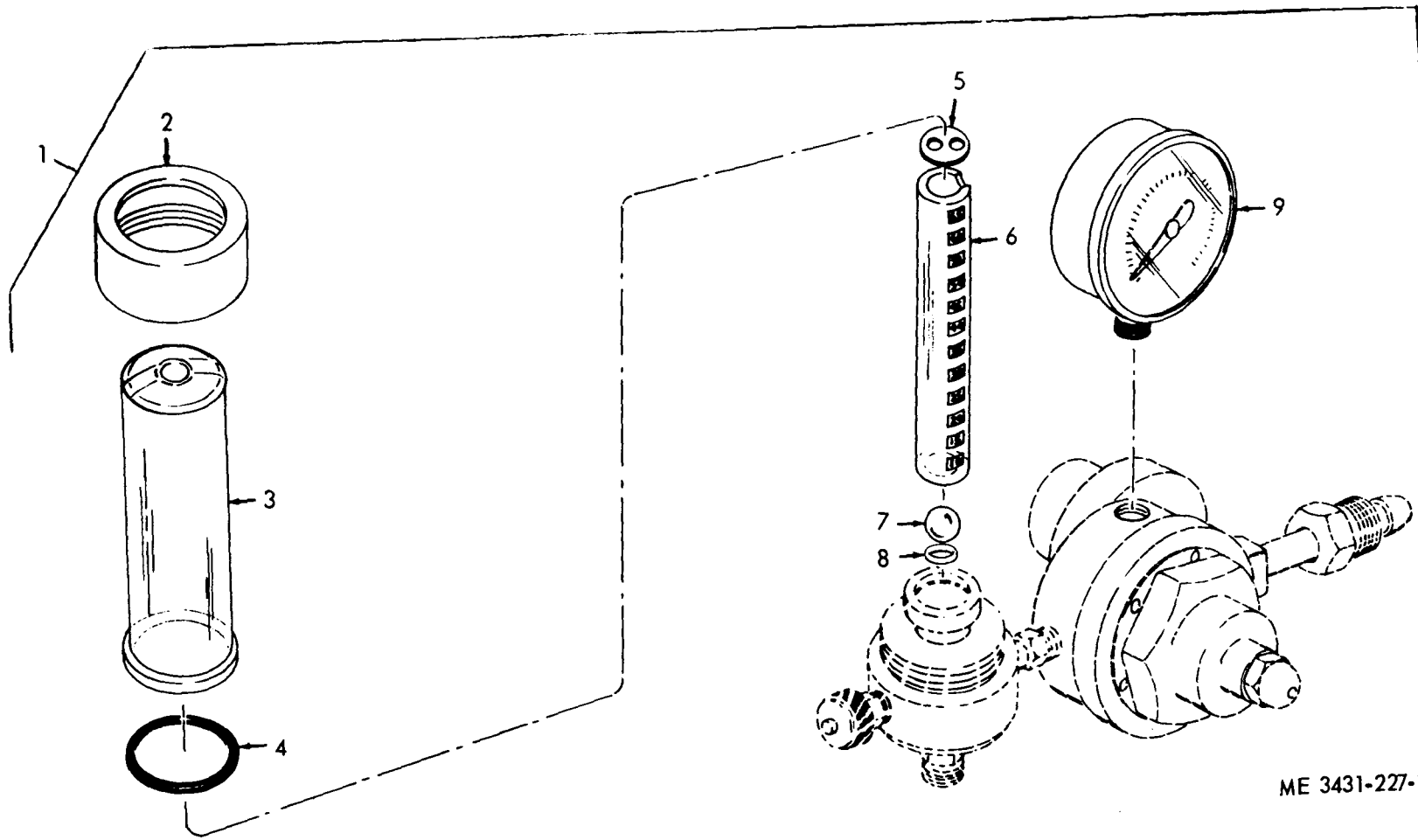


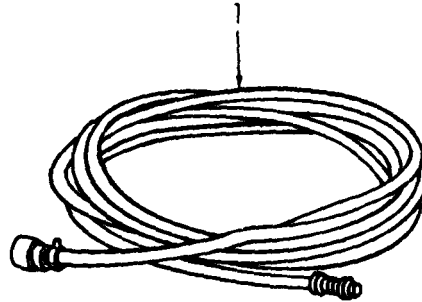
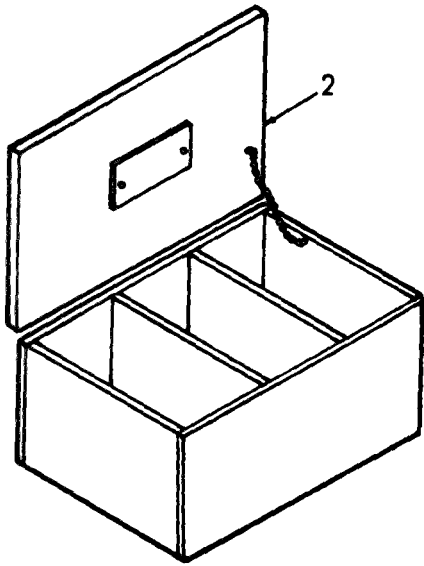
Figure 6. Handle

ME 3431-227-24P/6



ME 3431-227-24P/7

Figure 7. Regulator



ME 3431-227-24P/8

Figure 8. Carrying Case and Cable

SECTION VII. INDEX - FEDERAL STOCK NUMBER AND REFERENCE NUMBER
 CROSS-REFERENCE TO INDEX NUMBER

STOCK NUMBER	FIGURE NO	ITEM NO	STOCK NUMBER	FIGURE NO	ITEM NO
3431-446-1961	3	1	5310-550-1130	3	17
3431-446-2637	6	9	5310-559-0070	1	22
3431-446-2639	5	8	5310-576-5752	3	3
	5	28	5310-582-5965	2	8
3431-446-2641	5	23		3	6
3431-446-2642	5	29		3	13
3431-446-2643	5	17	5310-595-5437	6	14
3431-446-2644	5	33	5310-595-7237	3	26
3431-465-8847	7	3	5310-639-1532	5	10
3431-509-2562	7	1	5310-655-9659	6	12
3431-858-3080	1	21	5310-761-6882	2	7
3431-875-7624	6	20	5310-809-4085	3	30
3431-875-7632	6	24	5310-809-8544	2	13
3431-875-7633	6	15	5310-823-8804	3	7
3431-875-7635	5	30		3	14
3431-875-7637	5	37	5310-834-3156	2	3
3431-875-7638	5	36		4	2
3431-875-7641	6	21		4	8
3431-875-7642	5	35	5310-880-7744	3	31
3431-875-7644	5	21	5325-281-3536	5	18
3431-875-7645	5	24	5330-798-3717	7	4
3431-875-7646	5	22	5340-417-8878	3	8
3431-875-7648	5	27	5340-512-9403	3	10
3431-875-7655	8	2	5905-196-2300	1	3
3431-875-7656	1	36	5905-875-7883	2	17
3431-875-7657	1	32	5905-875-7886	2	9
3431-875-7930	5	32	5905-875-7887	2	15
3438-875-7652	5	6	5905-875-7890	1	25
4730-014-0561	1	11	5910-060-3911	4	6
5305-013-2124	3	22	5910-845-7400	2	22
5305-017-7355	3	16	5910-875-7880	6	17
5305-068-0511	3	25	5910-875-7888	2	18
5305-069-5122	2	10	5920-142-7383	1	8
5305-253-3756	5	38	5920-280-5062	1	7
5305-282-8904	6	8	5920-556-0144	1	6
5305-286-1494	3	5	5930-729-8720	6	11
5305-543-2023	4	7	5930-875-7879	6	10
5305-543-2665	2	6	5930-875-7882	1	16
5305-582-5807	2	2	5935-072-6056	1	12
	5	2	5945-846-0433	2	36
5305-582-5808	4	1	5945-875-7884	2	21
	6	2	5945-875-7889	4	4
5305-614-0247	5	20	5950-779-7302	3	19
5305-614-0266	5	48	6110-525-3067	3	11
5305-616-2529	6	3	6110-525-3068	3	15
5305-622-9476	1	17	6680-072-6186	7	6
5305-622-9478	1	20	6685-072-6184	7	9
5305-639-4845	3	12			
5305-639-4868	3	2			
5305-855-0968	5	16			
5305-855-0971	1	4			
5305-855-0972	1	9			
	1	37			
	2	1			
	2	16			
	5	12			
5305-855-0974	2	35			
5305-984-5676	5	7			
5305-984-6221	2	34			
5306-226-4827	3	28			
5310-010-3319	5	3			
	5	13			
	5	45			
	5	49			
	6	13			
5310-012-0622	1	18			
	2	11			
5310-013-4530	2	23			
	2	27			
5310-045-3299	1	19			
	2	22			
	3	23			
5310-045-4007	2	4			
	2	24			
	2	28			
	4	3			
5310-082-1404	2	25			
	5	4			
	5	14			
5310-167-0765	3	24			
5310-167-0766	3	18			
5310-209-0786	1	14			
5310-543-4791	1	13			

SECTION VII. INDEX - FEDERAL STOCK NUMBER AND REFERENCE NUMBER
 CROSS-REFERENCE TO INDEX NUMBER

REFERENCE NO	MFG CODE	FIG NO	ITEM NO	REFERENCE NO	MFG CODE	FIG NO	ITEM NO
AJ5-40	72794	1	41	121P47302S2	56289	6	17
AN3102A20-17S	88044	1	10	124B	09505	5	54
AN6227B4	88044	5	43	1257344	08452	3	9
BR30015	14655	4	6	1289441	08452	3	8
HVTSG2325-973	63026	7	1	13B5866G02	08452	3	21
IN4822	08452	2	30	1355076	08452	3	12
KP3A	21335	5	24	1405-08	63026	7	7
MS24629-10	96906	5	16	1407-21	63026	7	4
MS24629-21	96906	1	4	1408-25	63026	7	8
MS24629-23	96906	1	9	1408-82	63026	7	5
	96906	1	37	1424-0019	63026	7	9
	96906	2	1	1458309	88725	1	26
	96906	2	16	1486999	08452	3	20
	96906	5	12	1490515	08452	3	11
MS24629-25	96906	2	20	1490516	08452	3	15
	96906	2	35	1490517	08452	3	4
MS27183-6	96906	2	24	1490640	08452	3	19
	96906	2	25	1490698	08452	3	10
MS27183-7	96906	2	13	1581	71279	2	26
MS27183-9	96906	3	7	1603078	88725	1	30
	96906	3	14	1781453	88725	1	23
MS27183-16	96906	3	30	1797746	88725	1	34
MS35206-234	96906	2	34	1797751	88725	2	19
MS35206-296	96906	5	7	196A033H05	08452	1	15
MS35265-25	96906	4	7	199P297H01	88725	1	5
MS35265-28	96906	2	2	205A091H01	08452	6	9
	96906	5	2	210	08452	1	21
MS35265-31	96906	4	1	2209A69H0L	08452	5	40
	96906	6	2	2209A70H01	08452	5	47
MS35265-33	96906	5	48	221C652G01	08452	2	5
MS35265-46	96906	1	17	2213A03H01	08452	2	32
MS35265-49	96906	1	20	2213A04G01	08452	2	29
MS35265-55	96906	2	10	2213A42H01	08452	5	50
MS35265-77	96906	2	6	2213A83H01	08452	1	24
MS35333-38	96906	1	22	2213A87H01	08452	3	29
MS35333-39	96906	3	3	222A550H01	08452	6	22
MS35333-40	96906	3	17	24435	08452	1	2
MS35335-33	96906	1	14	282498	88725	5	18
MS35338-41	96906	2	4	3001	07903	1	16
	96906	2	28	301B663G03	08452	6	1
	96906	4	3	306B172H09	08452	5	33
MS35338-42	96906	1	19	310B141G01	08452	5	21
	96906	2	12	310B141H04	08452	5	23
	96906	3	23	310B142G01	08452	6	20
	96906	3	26	31D9649COMBBBOO	08452	3	1
MS35338-44	96906	2	8	311B703H02	08452	5	29
	96906	3	6	311B796G01	08452	6	16
	96906	3	13	312001	75915	1	8
MS35649-62	96906	2	3	312002	75915	1	7
	96906	2	23	31762	00779	6	23
	96906	2	27	320B222H02	08452	4	5
	96906	4	2	320B224G01	08452	4	4
	96906	4	8	342004	75915	1	6
MS35649-82	96906	1	18	3472D32G01	08452	1	40
	96906	2	11	3472D32H01	08452	1	44
MS35690-411	96906	1	13	3472D41G01	08452	5	19
MS51021-25	96906	6	8	419A002G02	08452	5	34
MS51041-49	96906	5	38	419A003H01	08452	5	32
MS51967-2	96906	2	7	419A005H02	08452	5	35
MS51967-5	96906	3	31	419A006H01	08452	5	37
MS90728-34	96906	3	28	419A006H02	08452	5	36
MS90728-62	96906	3	25	419A008H01	08452	5	15
PJ4P1	93790	2	22	419A009G01	08452	6	15
PM468	06352	1	12	419A010H01	08452	5	39
PR1D	77342	2	21	419A011H01	08452	5	17
PR10F	12697	1	25	419A025H01	08452	5	26
PR11D	77342	2	36	419A026H02	08452	5	25
SR2M1	28520	1	31	419A027H01	08452	5	27
SR6P1	28520	1	27	419A029H01	08452	5	5
SR8P1	28520	1	35	419A043H01	08452	5	55
TYPET9-4	82893	2	31	419A046H01	08452	6	21
TYPE2DATYPED	75042	2	17	419A065H01	08452	3	32
TYPE6-1-2E	75042	2	9	422A484H02	08452	6	18
UMC16	56289	4	9	422A505G01	08452	5	30
VPR20H1K	12697	2	15	427C605G04	08452	5	53
0149	44655	1	3	427C605G08	08452	5	51
1PB5	91929	6	11	427C637G13	08452	6	19
1SM1	91929	6	10	429C550G05	08452	6	24
1001-06	63026	7	2	432C524G10	08452	1	32
1002-02	63026	7	3	432C524H19	08452	1	33
1015-08	63026	7	6	435C512G04	08452	1	36
103184	08452	3	5	442A169H01	08452	5	22

SECTION VII. INDEX - FEDERAL STOCK NUMBER AND REFERENCE NUMBER
 CROSS - REFERENCE TO INDEX NUMBER

REFERENCE NO.	MFG CODE	FIG NO.	ITEM NO.	ITEMS NOT ILLUSTRATED		
				REFERENCE NUMBER	MFG CODE	GROUP NO.
447910P	88725	1	43			
448A024H01	08452	5	9			
448A043H01	08452	3	34			
448A043H02	08452	3	27	2212A14G01	08452	01
451A241G01	08452	6	6	54-52	05972	02
452A103H01	08452	5	44			
452A106H01	08452	5	42			
452A107H01	08452	5	46			
452A108H01	08452	5	41			
453A464H01	08452	6	7			
453A483H01	08452	5	31			
465A288H02	08452	2	33			
483B126G01	08452	1	1			
483B128G01	08452	1	5			
59C1598G13	08453	1	28			
59C1598G13	08452	8	2			
59C1598G19	08452	1	29			
6227-3	97073	5	8			
	97073	5	28			
637C247H01	08452	5	6			
637C251H01	08452	3	33			
652	83330	5	11			
658C594G01	08452	5	52			
720B083H01	08452	8	1			
7249-8	08452	2	14			
73P47306	56289	2	18			
827D037H05	08452	1	38			
827D037H16	08452	1	39			
827D099G01	08452	6	5			
827D099G02	08452	6	4			

By Order of the Secretary of the Army:

W. C. WESTMORELAND,
General, United States Army,
Chief of Staff.

Official:

VERNE L. BOWERS,
Major General, United States Army,
The Adjutant General.

Distribution:

To be distributed in accordance with DA Form 12-25, Section I (qty rqr block no. 182) Organizational Maintenance requirements for Welding Equipment.

U.S. GOVERNMENT PRINTING OFFICE: 1989 - 242-451 (5145)

RECOMMENDED CHANGES TO EQUIPMENT TECHNICAL PUBLICATIONS



THEN...JOT DOWN THE
DOPE ABOUT IT ON THIS FORM.
CAREFULLY TEAR IT OUT, FOLD IT
AND DROP IT IN THE MAIL.

SOMETHING WRONG WITH PUBLICATION

FROM: (PRINT YOUR UNIT'S COMPLETE ADDRESS)

DATE SENT

PUBLICATION NUMBER

PUBLICATION DATE

PUBLICATION TITLE

BE EXACT PIN-POINT WHERE IT IS

PAGE
NO.

PARA-
GRAPH

FIGURE
NO.

TABLE
NO.

IN THIS SPACE, TELL WHAT IS WRONG
AND WHAT SHOULD BE DONE ABOUT IT.

TEAR ALONG PERFORATED LINE

PRINTED NAME, GRADE OR TITLE AND TELEPHONE NUMBER

SIGN HERE

The Metric System and Equivalents

Linear Measure

1 centimeter = 10 millimeters = .39 inch
 1 decimeter = 10 centimeters = 3.94 inches
 1 meter = 10 decimeters = 39.37 inches
 1 dekameter = 10 meters = 32.8 feet
 1 hectometer = 10 dekameters = 328.08 feet
 1 kilometer = 10 hectometers = 3,280.8 feet

Weights

1 centigram = 10 milligrams = .15 grain
 1 decigram = 10 centigrams = 1.54 grains
 1 gram = 10 decigrams = .035 ounce
 1 dekagram = 10 grams = .35 ounce
 1 hectogram = 10 dekagrams = 3.52 ounces
 1 kilogram = 10 hectograms = 2.2 pounds
 1 quintal = 100 kilograms = 220.46 pounds
 1 metric ton = 10 quintals = 1.1 short tons

Liquid Measure

1 centiliter = 10 milliliters = .34 fl. ounce
 1 deciliter = 10 centiliters = 3.38 fl. ounces
 1 liter = 10 deciliters = 33.81 fl. ounces
 1 dekaliter = 10 liters = 2.64 gallons
 1 hectoliter = 10 dekaliters = 26.42 gallons
 1 kiloliter = 10 hectoliters = 264.18 gallons

Square Measure

1 sq. centimeter = 100 sq. millimeters = .155 sq. inch
 1 sq. decimeter = 100 sq. centimeters = 15.5 sq. inches
 1 sq. meter (centare) = 100 sq. decimeters = 10.76 sq. feet
 1 sq. dekameter (are) = 100 sq. meters = 1,076.4 sq. feet
 1 sq. hectometer (hectare) = 100 sq. dekameters = 2.47 acres
 1 sq. kilometer = 100 sq. hectometers = .386 sq. mile

Cubic Measure

1 cu. centimeter = 1000 cu. millimeters = .06 cu. inch
 1 cu. decimeter = 1000 cu. centimeters = 61.02 cu. inches
 1 cu. meter = 1000 cu. decimeters = 35.31 cu. feet

Approximate Conversion Factors

To change	To	Multiply by	To change	To	Multiply by
inches	centimeters	2.540	ounce-inches	newton-meters	.007062
feet	meters	.305	centimeters	inches	.394
yards	meters	.914	meters	feet	3.280
miles	kilometers	1.609	meters	yards	1.094
square inches	square centimeters	6.451	kilometers	miles	.621
square feet	square meters	.093	square centimeters	square inches	.155
square yards	square meters	.836	square meters	square feet	10.764
square miles	square kilometers	2.590	square meters	square yards	1.196
acres	square hectometers	.405	square kilometers	square miles	.386
cubic feet	cubic meters	.028	square hectometers	acres	2.471
cubic yards	cubic meters	.765	cubic meters	cubic feet	35.315
fluid ounces	milliliters	29.573	cubic meters	cubic yards	1.308
pints	liters	.473	milliliters	fluid ounces	.034
quarts	liters	.946	liters	pints	2.113
gallons	liters	3.785	liters	quarts	1.057
ounces	grams	28.349	liters	gallons	.264
pounds	kilograms	.454	grams	ounces	.035
short tons	metric tons	.907	kilograms	pounds	2.205
pound-feet	newton-meters	1.356	metric tons	short tons	1.102
pound-inches	newton-meters	.11296			

Temperature (Exact)

°F Fahrenheit temperature 5/9 (after subtracting 32) Celsius temperature °C

PIN:005431-000